



Great Magtech (Xiamen) Electric Co., Ltd

Magnet Chuck

Since 2015

Tel: +86-592-6682467

E-mail: sales@greatmagtech.com

Mob/Wechat/Whatsapp: +86-13850081554

Website: www.greatmagtech.com

www.gme-magnet.com

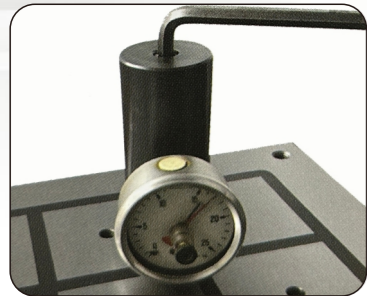
Address: 5F, No.601 Hengtian Rd, Jimei District,
Xiamen, China (361024)



Electro-Permanent Magnetic Chuck



Pole Extension: 50x50x30 /75x75x20mm



The Max Clamping Force Can Be 17kgf/cm²



Smooth Chamfer



Sicle Polishing



Waterproof Quick Connectors

Control Unit



Control Unit Faceplate

Chuck Connection Port

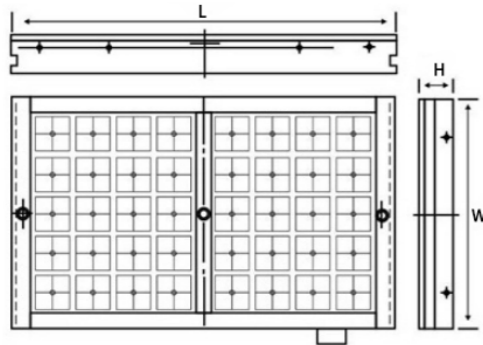
Power Connection Port

Remote Controller Connection Port

Cnc Control Port

Remote Controller

Electro-Permanent Magnetic Chuck EP50 Series



Feature:

1. Comprising 75mm*75mm poles with a force of 15-17kgf/cm².
2. It is possible to predetermine the force generated by counting the number of poles, workpiece gripping at least 4 pole contact faces.
3. The controller does the magnetizing or demagnetizing in 0.5~5 seconds.
4. Chuck is tested for slipping force, waterproof test, temperature rise test, and electrical & demagnetizing tests.

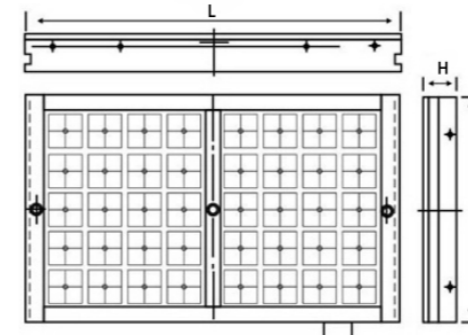
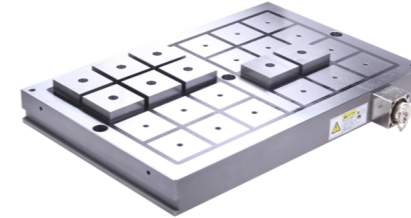
Suitable:

1. Used for normal and heavy-duty drilling, milling, and CNC machining center.
2. Best used for workpieces at least 250*250 mm and 10 mm thick, for small and medium dimensions with normal operating air gaps.

Specification:

Model	Dimension(mm)			Pole Number	Weight(kgs)	
	Length	Width	High		Net	Gross
GME-EP50-205	470	258	58	18	68	72
GME-EP50-206	595	258	58	24	81	89
GME-EP50-208	775	258	58	30	106	116
GME-EP50-209	900	258	58	36	123	133
GME-EP50-210	1025	258	58	42	140	152
GME-EP50-303	327	315	58	16	54	62
GME-EP50-304	436	315	58	24	78	86
GME-EP50-305	496	315	58	28	85	93
GME-EP50-306	595	315	58	32	99	109
GME-EP50-308	775	315	58	40	129	139
GME-EP50-309	900	315	58	48	150	162
GME-EP50-310	1025	315	58	56	171	183
GME-EP50-403	430	320	58	24	73	82
GME-EP50-405	490	430	58	36	112	120
GME-EP50-406	605	436	58	48	140	150
GME-EP50-408	775	436	58	60	179	189
GME-EP50-409	900	436	58	72	208	220
GME-EP50-410	1000	400	68	84	212	225
GME-EP50-503	500	315	58	28	83	92
GME-EP50-505	510	500	58	42	135	142
GME-EP50-506	605	500	58	56	160	170
GME-EP50-508	770	500	68	70	204	214
GME-EP50-509	900	500	68	84	238	250
GME-EP50-510	1010	500	68	98	267	278
GME-EP50-603	600	310	58	32	98	106
GME-EP50-604	600	436	58	48	140	150
GME-EP50-605	600	500	58	56	139	149
GME-EP50-606	615	600	58	72	195	207
GME-EP50-608	625	770	68	90	255	267
GME-EP50-609	890	615	68	108	290	320
GME-EP50-610	1010	615	68	126	329	349

Electro-Permanent Magnetic Chuck EP75 Series



Feature:

1. Comprising 75mm*75mm poles with a force of 15-17kgf/cm².
2. It is possible to predetermine the force generated by counting the number of poles, workpiece gripping at least 4 pole contact faces.
3. The controller does the Magnetizing or demagnetizing in 0.5~5 seconds.
4. Chuck is tested for Slipping force, Waterproof test, Temperature rise test, Electrical & Demagnetizing tests.

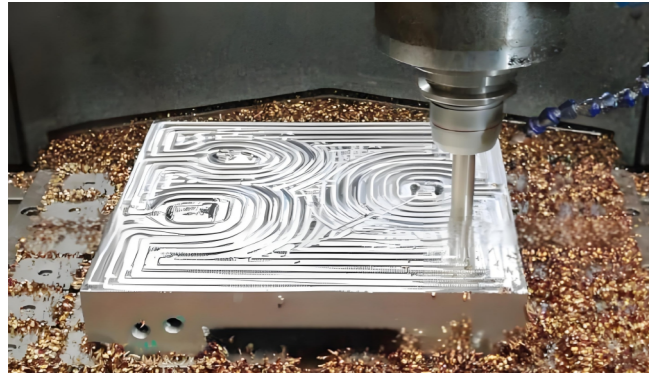
Suitable:

1. Used for normal and heavy-duty drilling, milling, and CNC machining center.
2. Best used for workpieces at least 400*400 mm and 18 mm thick, Ideal for general pieces of various dimensions with normal operating air gaps and medium thicknesses.

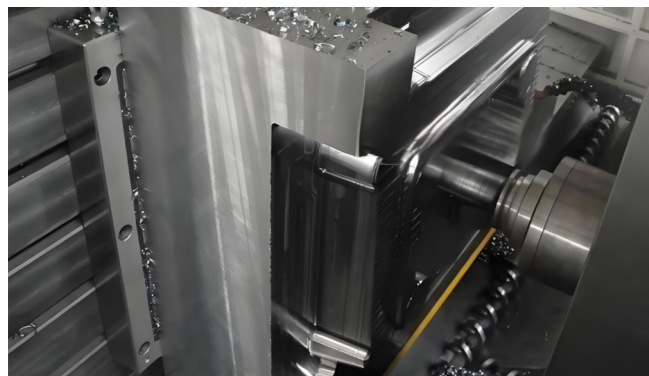
Specification:

Model	Dimension(mm)			Pole Number	Weight(kgs)	
	Length	Width	High		Net	Gross
GME-EP75-206	620	230	58	12	75	83
GME-EP75-208	770	230	58	16	93	102
GME-EP75-210	1030	230	58	20	126	136
GME-EP75-304	410	320	58	12	69	77
GME-EP75-305	510	340	58	15	80	86
GME-EP75-306	620	300	58	18	98	108
GME-EP75-308	770	300	58	24	123	133
GME-EP75-310	1030	300	58	30	164	176
GME-EP75-404	420	420	58	16	93	101
GME-EP75-405	510	420	58	20	113	121
GME-EP75-406	630	420	58	24	140	148
GME-EP75-408	810	420	58	32	180	188
GME-EP75-410	1030	420	68	40	229	239
GME-EP75-502	510	230	58	10	62	69
GME-EP75-504	510	420	58	20	113	121
GME-EP75-506	630	500	58	30	167	175
GME-EP75-508	810	500	68	40	215	223
GME-EP75-509	950	510	68	45	256	272
GME-EP75-510	1000	500	68	50	265	275
GME-EP75-602	610	230	58	12	74	84
GME-EP75-604	630	420	58	24	140	148
GME-EP75-606	600	600	58	36	190	200
GME-EP75-608	800	600	68	48	255	262
GME-EP75-610	1020	600	68	60	324	336

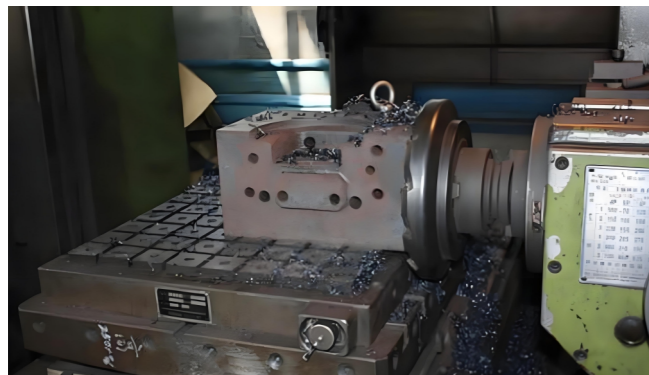
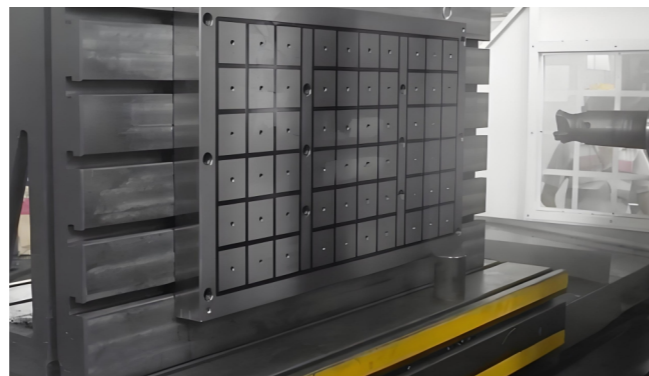
Application



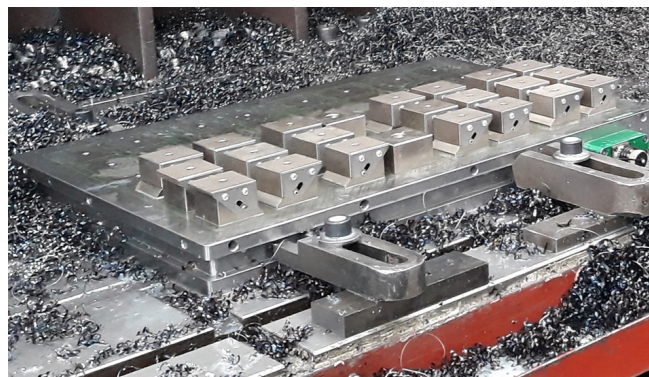
Vertical Machining Center



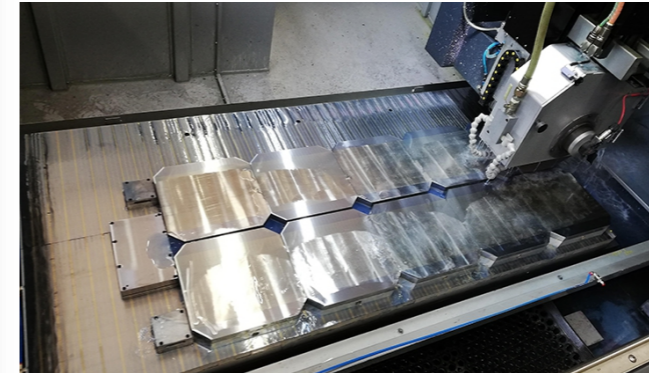
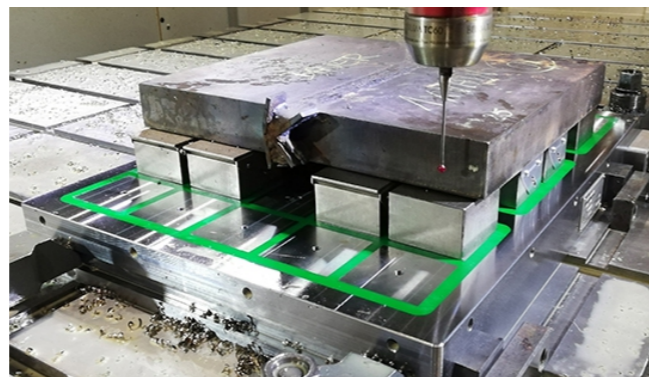
Horizontal Machining Center



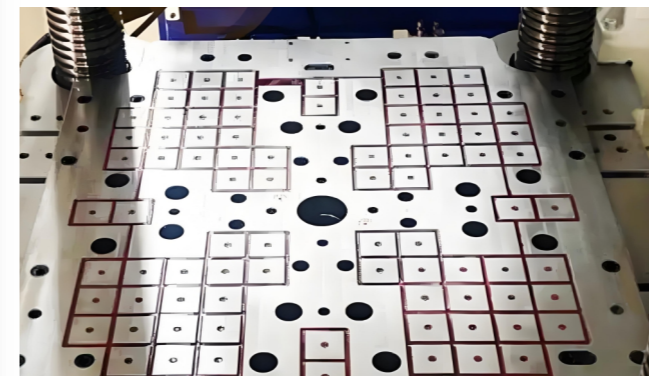
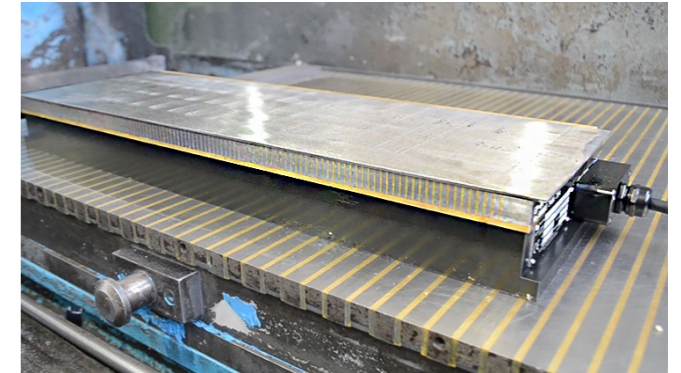
Milling Machine



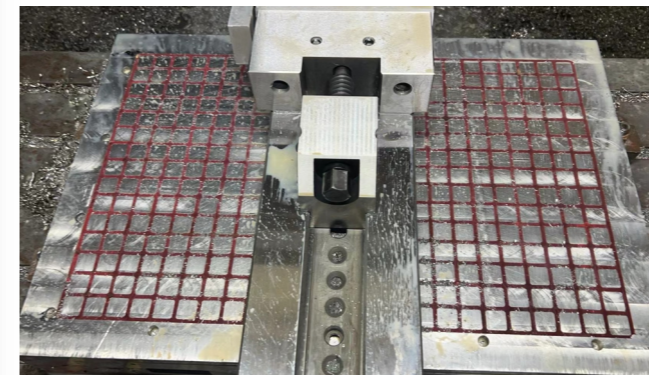
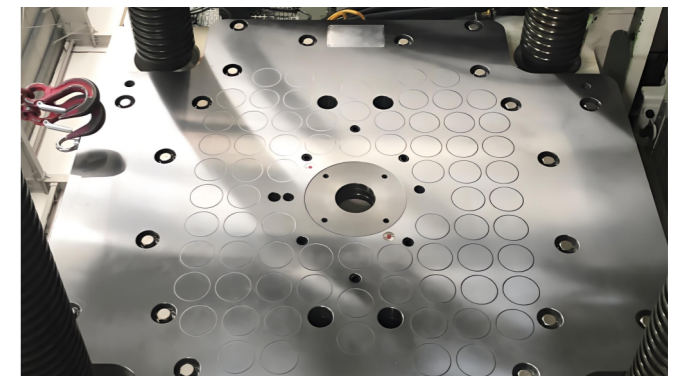
Drilling Machine



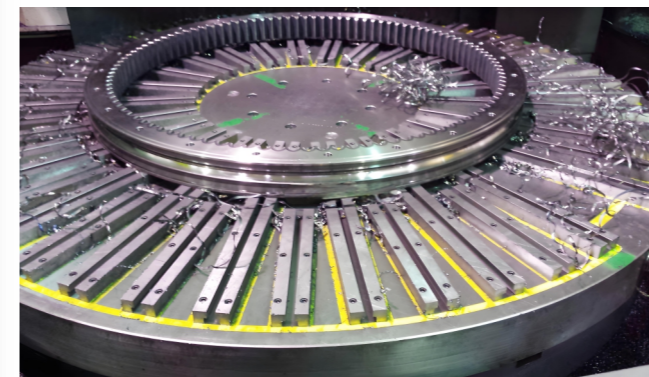
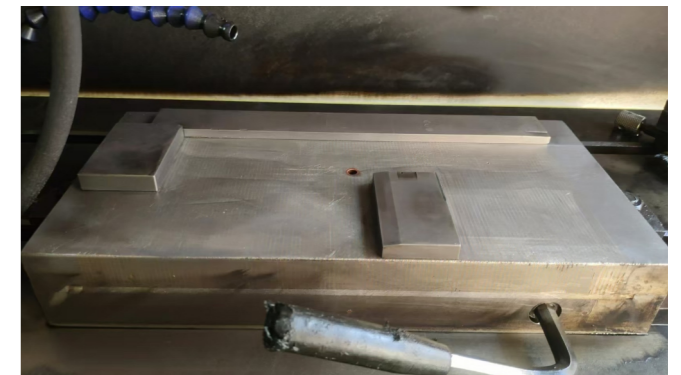
EDM



Injection Molding Machine



Grinding Machine

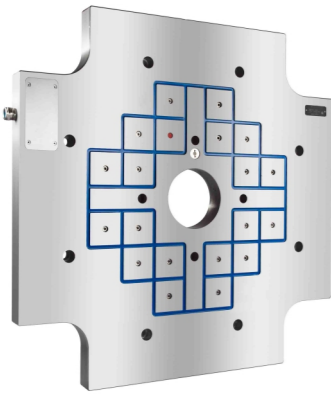


Vertical Lathe Machine



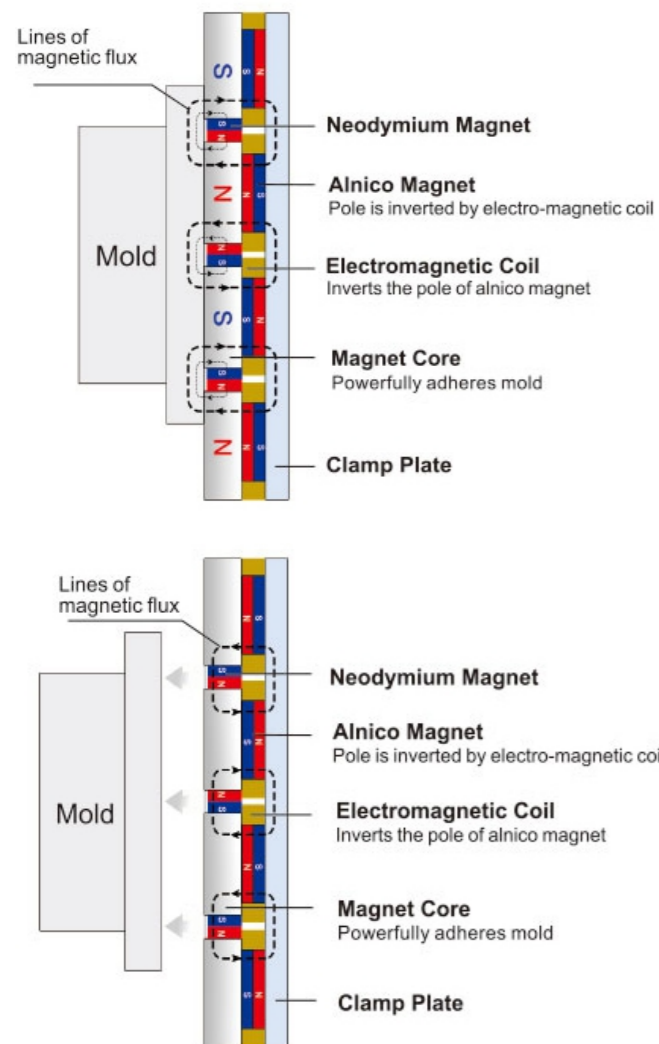
Electro-Permanent Magnetic Chuck for Plastic Injection Machine

Feature:



1. Electro-permanent magnetic chuck quick mold change system provides a much greater improvement in mold change efficiency. It performs less than 3 minutes for mold changing of general injection molding machine. For large-size machines, it will shorten the mold changing time from 2 hours down to 10 minutes.
2. The system requires just a single operator for mold-changing job. Without any tool, the operator can easily handle this system beyond the safety distance of the machine.
3. Standard working temperature: 120°C (150/200/optional).
4. According to the brand and application requirements of the injection molding machine used by the customer, design the corresponding adjustment.

Working Principle:



Magnetization:

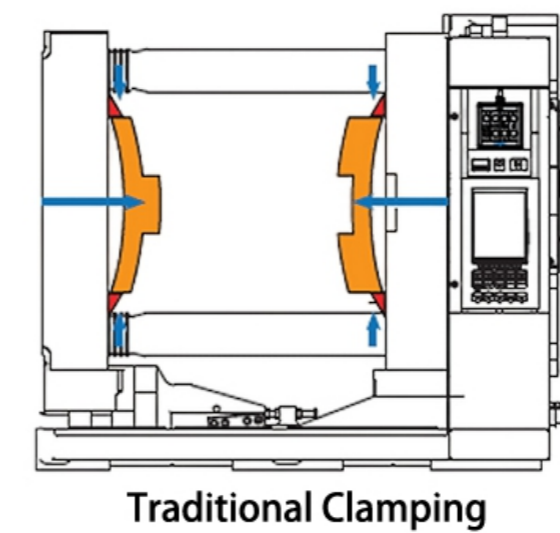
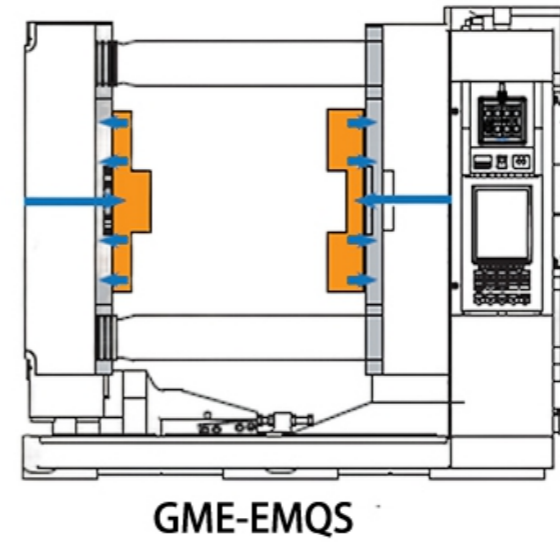
During the Mag phase, the magnetic flux is short-circuited outside the magnetic surface, safely clamping the mold with a very limited magnetic depth, so as not to affect any internal part of the engaged mold.

Demagnetization:

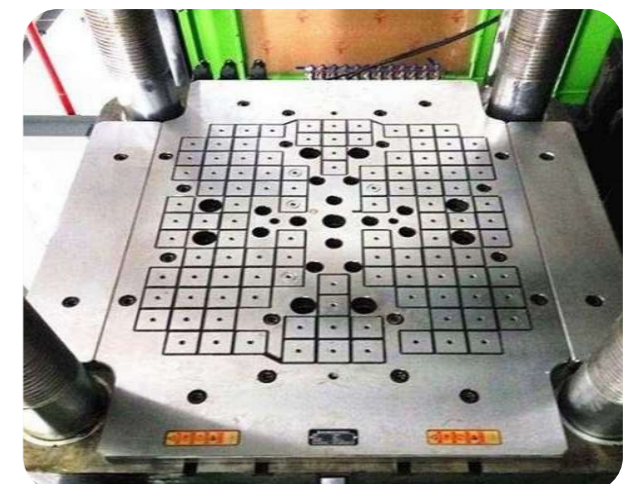
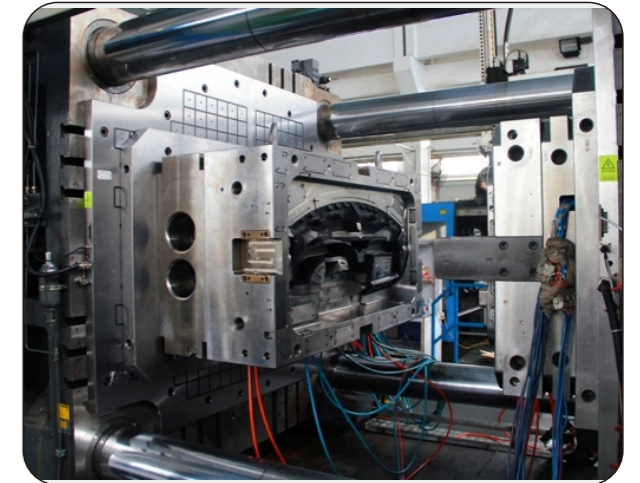
During the Demag phase, the magnetic flux is short inside the magnetic module frame, perfectly releasing the mold for its changeover.

Clamping Force Uniformity:

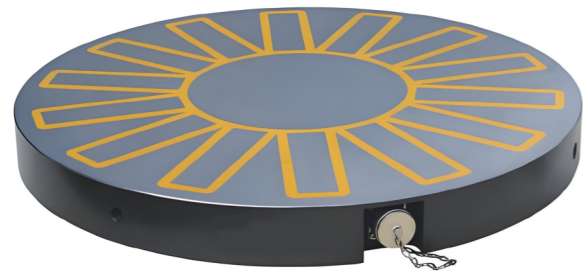
Traditional clamping focuses the clamping forces around the peripheral edges of the mold. Magnetic clamping generates clamping force over the entire surface of the mold. Once the mold is magnetized it is nearly a part of the machine platen. This increased rigidity equates to higher parts, increased repeatability, and less maintenance of the mold.



Application:



Circular Electro-Permanent Magnetic Chuck With Radial Poles

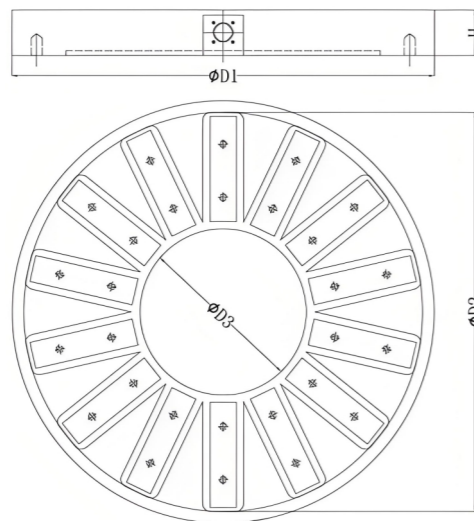


Feature:

1. Highest clamping force up to 16kgf/ cm².
2. Electro-permanent technology with no deformation.
3. Owing to the rise of the temperature.
4. Can eliminate the residual magnetism from the workpiece.
5. T-slot can be used with pole extension for the grinding wheel at three-side operation.
6. Minimum mechanical deformation with solid one-piece housing.

Suitable:

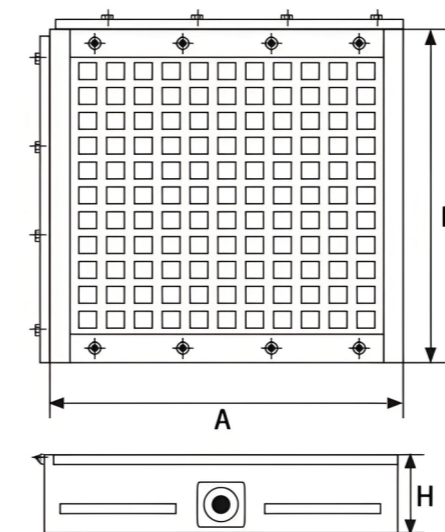
Clamping for grinding of ring shaped workpieces.



Specification:

Model	Dimensions(mm)					Number of Poles
	D1	D2	D3	H	Weight (Kgs)	
GME-DYZ-F 600R	635	600	250	80	168	14
GME-DYZ-F 800R	835	800	250	80	320	14
GME-DYZ-F 1000R	1035	1000	250	80	520	28/14
GME-DYZ-F 1200R	1285	1250	250	80	832	28/14
GME-DYZ-F 1300R	1335	1300	350	80	864	36/18

Super Permanent Magnetic Chuck



Features:

1. The magnetic force is generated by high-performance materials, with no time limit, no energy consumption, no heat generation, environmental protection and safety, and simple and practical operation.
2. Super strong suction force and magnetic force can be superimposed and increased according to the increase of the contact area of the workpiece and can be used for powerful milling and drilling.
3. The super strong permanent suction cup panel is rigid and stable and does not heat up and produce deformation during use, allowing for precision machining.
4. A simple mechanical switch, with no power supply, is required, avoiding the risk of the workpiece falling off due to the sudden loss of power and the disappearance of the magnetic force.
5. Easy and quick change of clamping workpiece, shortening the workpiece clamping and adjustment time, realizing five-sided machining and significantly increasing the working efficiency by 80%.

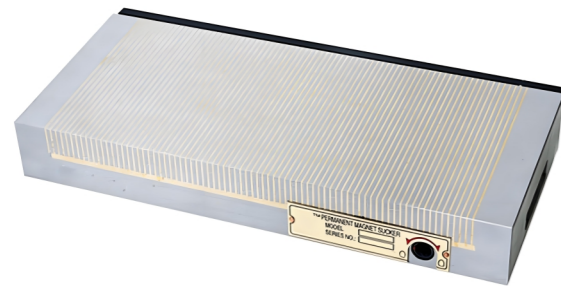
Application:

It is suitable for metal cutting processing and is commonly used in CNC machining centers, CNC carving, and milling machines, grinding machines, and other mechanical processing equipment.

Specification:

Type	Model	Size(mm)			Magnetic Block	Magnetic Force Block (kgf)	Total Suction(kgf)
		A	B	H			
12X12	GME-PMSC-1530C	150	300	55	116	15	1740
	GME-PMSC-1540C	150	400	55	184		2760
	GME-PMSC-2040C	200	400	65	207		3105
	GME-PMSC-2025B	200	256	50	56		1400
	GME-PMSC-2525A	253	252	90	90		2250
18x18	GME-PMSC-2040A	200	400	80	136	25	3400
	GME-PMSC-3030A	300	300	90	132		3300
	GME-PMSC-3040A	300	400	90	176		4400
	GME-PMSC-3040B	293	376	60	132		3300
	GME-PMSC-30100A	300	1000	90	352		8800
	GME-PMSC-3060A	300	600	90	275		6875
	GME-PMSC-3535A	350	350	90	182		4550
	GME-PMSC-4040A	400	400	90	240		6000
	GME-PMSC-4050A	400	500	90	300		7500
	GME-PMSC-4060A	400	600	90	375		9375
	GME-PMSC-4080A	400	800	90	480		12000
	GME-PMSC-5050	500	500	110	400		10000
	GME-PMSC-5060	500	600	110	500		12500
	GME-PMSC-5080	500	800	110	640		16000
	GME-PMSC-50100	500	1000	110	800		20000
	GME-PMSC-6060	600	600	110	600		15000
	GME-PMSC-6080	600	800	110	768		19200
	GME-PMSC-60100	600	1000	110	960		24000

Standard Pole Permanent Magnetic Chuck



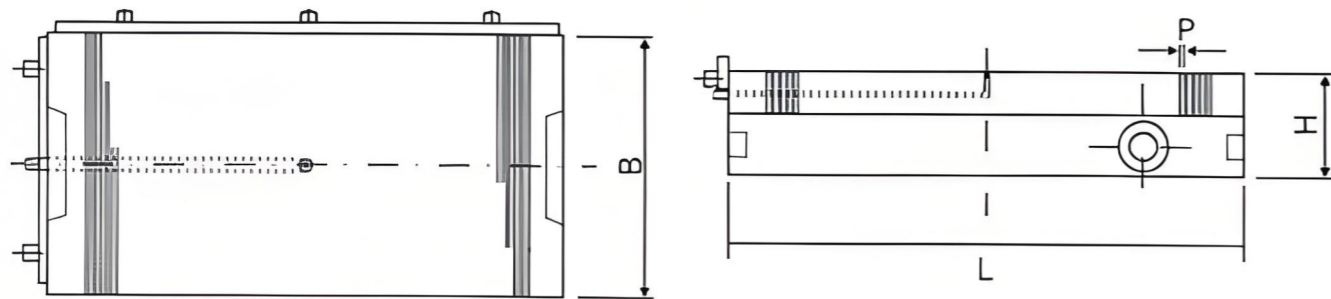
Feature:

Strong magnetic force and less remaining magnetism. Coolant and waterproof structure.

Parallelism, flatness, and squareness 0.005mm/100mm.

Suitable:

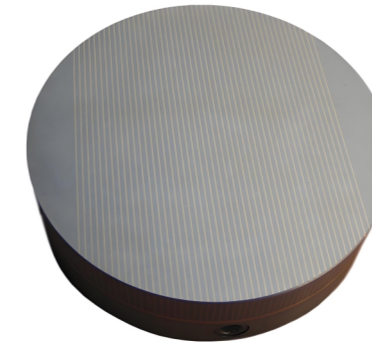
Suitable for grinding and EDM application. Best for medium size workpieces.



Specification:

Model	L(mm)	B(mm)	H(mm)	T(mm)	P=P1+P2	Net(kgs)
GME-PMC S-1010	100	100	45	18	2+4	3.6
GME-PMC S-7016	160	70	45	18	2+4	4
GME-PMC S-1515	150	150	48	20	2+4	8
GME-PMC S-1520	200	150	48	20	2+4	11
GME-PMC S-1525	250	150	48	20	2+4	13.6
GME-PMC S-1530	300	150	48	20	2+4	16.8
GME-PMC S-1535	350	150	48	20	2+4	19.6
GME-PMC S-1540	400	150	53	20	2+4	23.8
GME-PMC S-1545	450	150	53	20	2+4	26.5
GME-PMC S-2020	200	200	48	22	2+4	15
GME-PMC S-2025	250	200	48	22	2+4	18.5
GME-PMC S-2035	350	200	53	22	2+4	28.5
GME-PMC S-2040	400	200	53	22	2+4	31.8
GME-PMC S-2045	450	200	53	22	2+4	39.5
GME-PMC S-2550	500	250	58	23	2+4	53.5
GME-PMC S-3060	600	300	58	23	2+4	77

Micro Pole Round Permanent Magnetic Chuck

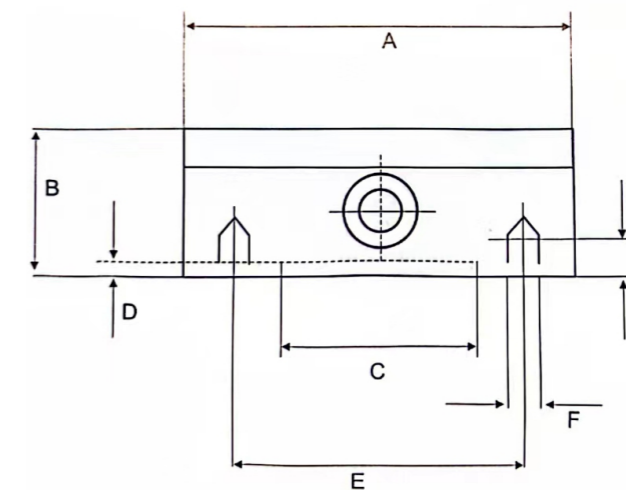


Feature:

Permanent magnetic chucks consist of Ndfeb magnets for maximum work-holding and easy release. Normally the units are made up of brass and steel top plates. A concentric ring gives maximum resistance to coolant and accuracy in centering the workpieces on the chuck. The chucks also consist of removable handles. Circular magnetic chucks are available in both standard poles and fine configurations.

Suitable:

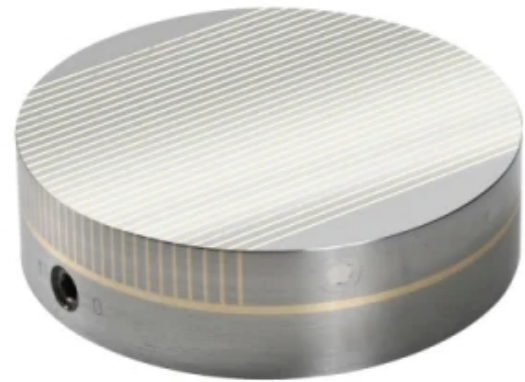
Best for small, medium, and thinner workpieces.



Specification:

Model	Dimension(mm)							Weight(kg)
	A	B	C	E	D	F	G	
GME-RMC M-100	100	43	65	85	2	3xM8	14	2
GME-RMC M-130	130	43	100	115	2	3xM8	14	4.5
GME-RMC M-160	160	43	125	140	2	4xM8	14	6.5
GME-RMC M-200	200	43	160	180	2	4xM8	14	10
GME-RMC M-250	250	43	200	224	2	4xM10	14	15
GME-RMC M-300	300	45	230	260	3	4xM10	14	25
GME-RMC M-320	320	45	230	260	3	4xM10	14	32
GME-RMC M-350	350	51	300	330	4	4xM10	16	43
GME-RMC M-400	400	51	300	350	4	6xM10	16	52

Fine Pole Round Permanent Magnetic Chuck

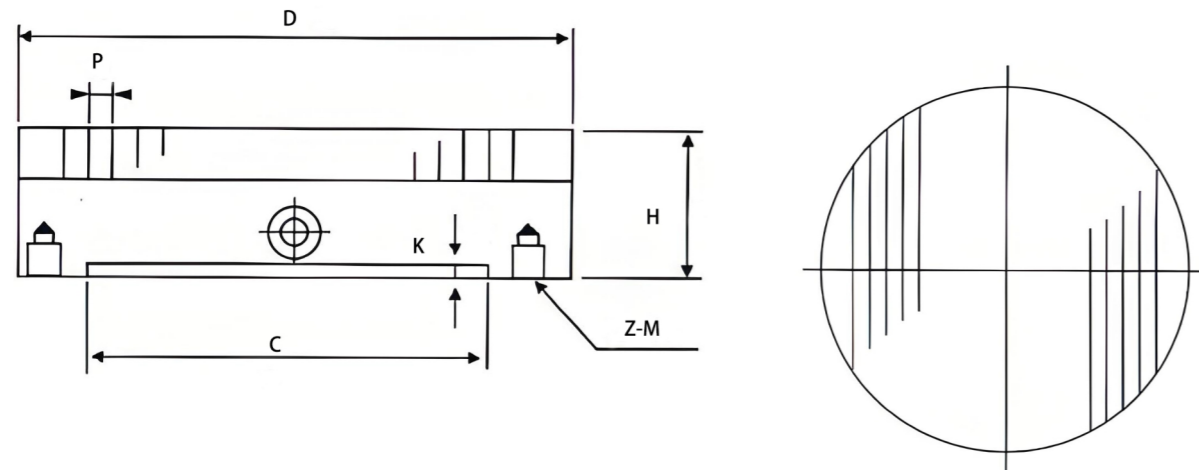


Feature:

1. Permanent magnetic chuck with Neodymium magnets, strong magnetic force, and less remaining magnetism.
2. Pole pitch 4mm.

Suitable:

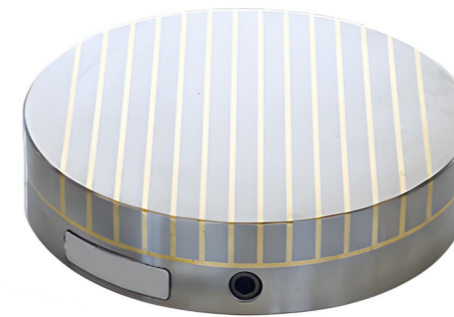
Clamping of small and thin to medium-sized workpieces.



Specification:

Model	Dimension(mm)							Weight(kg)
	D	H	K	C	Z	M	P	
GME-RMC F-125	125	48	3	80	4	M6	0.5+1.5	4.6
GME-RMC F-150	150	48	3	100	4	M6	0.5+1.5	6.6
GME-RMC F-160	160	48	3	100	4	M8	0.5+1.5	8.9
GME-RMC F-200	200	52	4	120	4	M8	0.5+1.5	12.8
GME-RMC F-250	250	52	4	160	4	M8	0.5+1.5	20
GME-RMC F-300	300	58	4	220	4	M8	0.5+1.5	32
GME-RMC F-400	400	58	4	300	4	M10	0.5+1.5	57
GME-RMC F-500	500	65	5	408	4	M12	0.5+1.5	100
GME-RMC F-600	600	65	5	528	4	M12	0.5+1.5	144

Powerful Round Permanent Magnetic Chuck

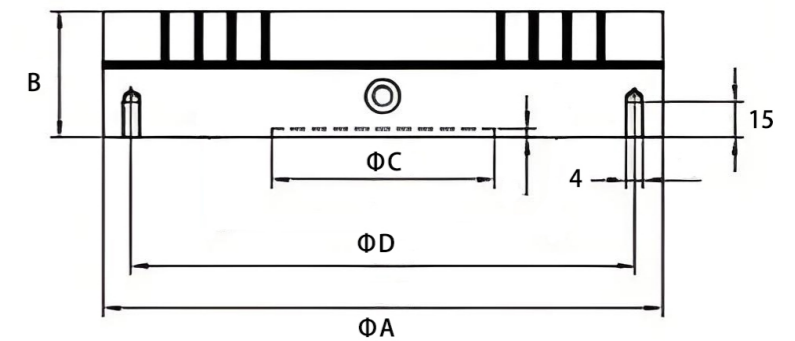
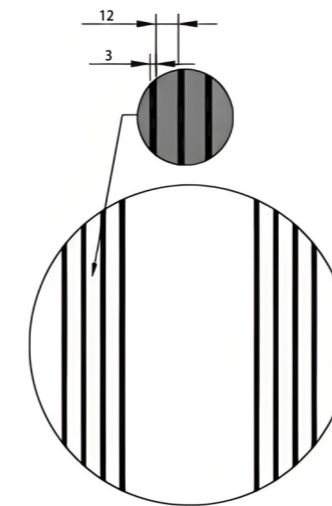


Feature:

1. Extremely high holding force combined with slim construction.
2. The complete, wide (steel/brass) pole distribution ensures a consistently high holding force across the entire width all the way to the longitudinal edges. These clamping plates can be activated via a hexagonal switch.

Suitable:

Permanent magnetic chuck is suitable for heavy clamp lifting. It can be used for milling, turning, and grinding. Significant holding force is still achieved on uneven and rough surfaces. They allow universal clamping of small, medium, and large workpieces of any thickness, however, they are best suited for thick and large workpieces.



Specification:

Model	Dimension(mm)						Gross Weight(kg)
	A	B	C	D	E	Pole Pitch	
GME-RMC P-100	100	56	70	91	3xM5	12+3	4.5
GME-RMC P-130	130	56	90	120	4xM6	12+3	7
GME-RMC P-160	160	56	125	142	4xM8	12+3	10
GME-RMC P-200	200	56	150	182	4xM8	12+3	15
GME-RMC P-250	250	56	200	232	4xM8	12+3	25
GME-RMC P-300	300	56	250	285	4xM8	12+3	35
GME-RMC P-350	350	56	300	334	4xM8	12+3	51
GME-RMC P-400	400	61	300	350	6xM10	12+3	68
GME-RMC P-450	450	61	350	400	6xM10	12+3	82
GME-RMC P-500	500	61	400	450	6xM10	12+3	101

Radial Pole Round Permanent Magnetic Chuck

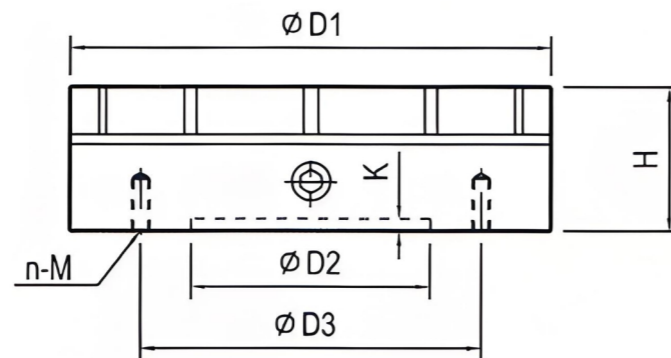
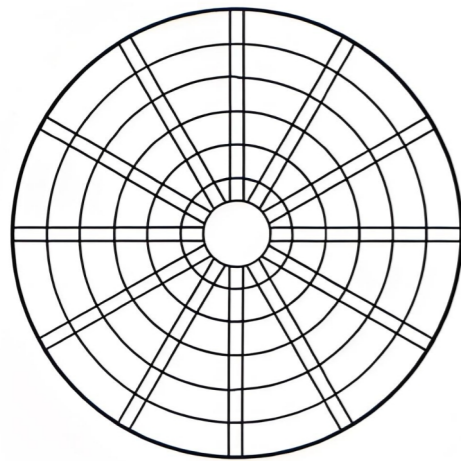


Feature:

1. Permanent magnetic chuck with neodymium magnets, strong magnetic force and low residual magnetism.
2. Nominal holding force: 180N/cm².
3. Concentric grooves simplify centering of workpieces.
4. Symmetrical design allows high-speed rotation.
5. Center through hole for workpiece centering and coolant supply available on request.
6. T-slots on the top plate available on request for adjustable rod extension to fix bearing rings during turning or grinding of inner and outer rings.

Suitable:

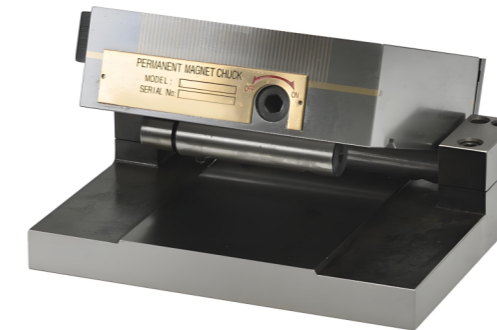
Grinding and turning of annular workpieces.



Specification:

Model	D1(mm)	H(mm)	D2(mm)	D3(mm)	n(mm)	M	k(mm)	Weight(Kgs)
GME-RMC R-130	130	60	50	100	4	M6	4	6
GME-RMC R-150	150	60	90	115	4	M8	4	8
GME-RMC R-160	160	60	120	140	4	M8	4	10
GME-RMC R-200	200	60	160	180	4	M8	4	14
GME-RMC R-250	250	60	200	235	4	M10	4	23
GME-RMC R-300	300	80	250	270	7	M12	4	43
GME-RMC R-350	350	80	250	280	6	M12	4	59
GME-RMC R-400	400	80	200	360/340	12	M10	6	78
GME-RMC R-500	500	95	200	300/400	12	M10	8	148
GME-RMC R-600	600	95	250	350/450	12	M10	8	210

Single Sine Permanent Magnetic Chuck

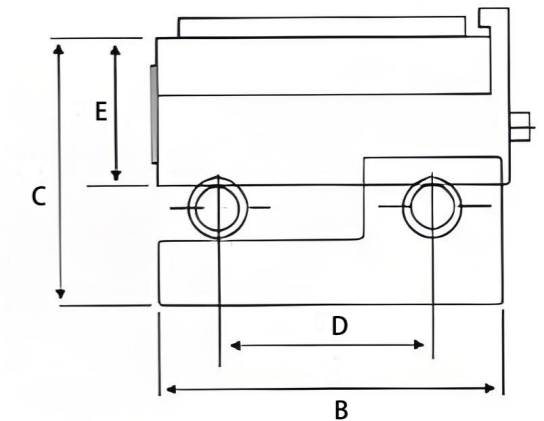
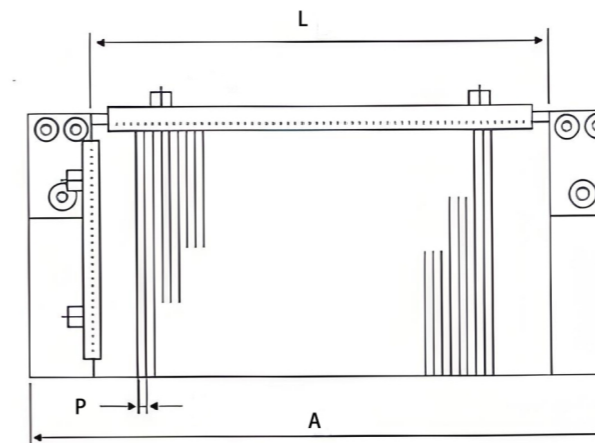


Feature:

1. The base is made of high-carbon mold steel and quenched, with a hardness of HRC52°.
2. The parallelism of the suction cup is within 0.005mm/100mm.
3. The center accuracy of the two pads is within 0.005mm.
4. The adjustable angle range is 0-60° .

Suitable:

Suitable for high grinding EDM for angle process.



Specification:

Model	Dimensions(mm)							Operating Angle	Weight(kgs)
	L	B	C	D	E	A	Pole Pitch		
GME-MCS-10175	175	100	86	75	48	225	0.5+1.5 or 1+3	0°-60°	11.5
GME-MCS-1515	150	150	86	100	48	200	0.5+1.5 or 1+3	0°-60°	15
GME-MCS-1530	300	150	86	100	48	350	0.5+1.5 or 1+3	0°-60°	32
GME-MCS-12525	250	125	86	75	48	300	0.5+1.5 or 1+3	0°-60°	19.5

Double Sine Permanent Magnetic Chuck

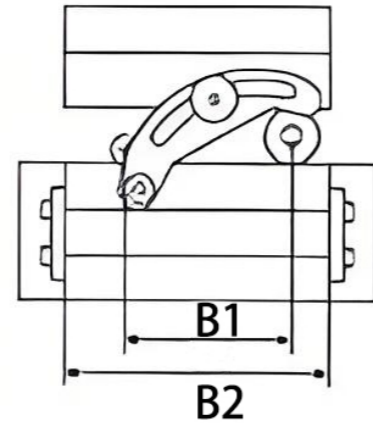
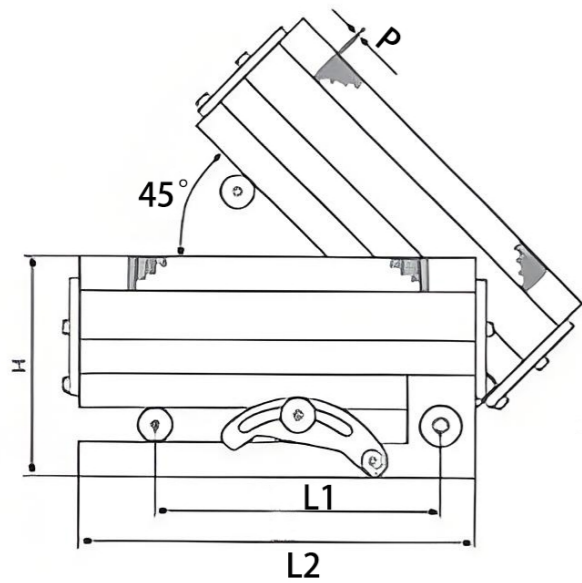


Feature:

1. The dip sine permanent magnetic chuck can be tilted in the X.Y direction, and can also grind the formed workpiece from two directions at one time.
2. The base is made of high-carbon mold steel and quenched, with a hardness of HRC52°.
3. The parallelism of the suction cup is within 0.005mm/100mm.
4. The center accuracy of the two pads is within 0.005mm.
5. The adjustable angle range is 0-45°.

Suitable:

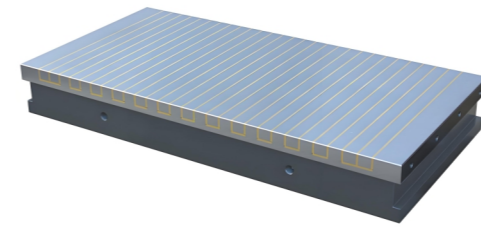
Suitable for high-precision angle grinding processing at the front and back or left and right angles.



Specification:

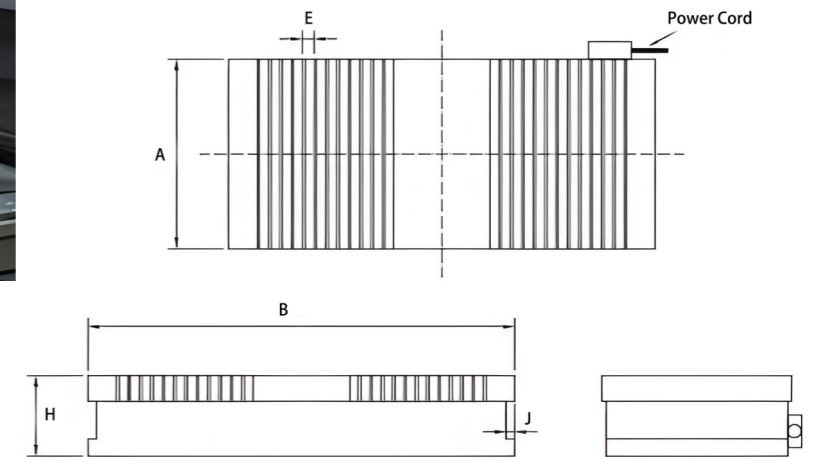
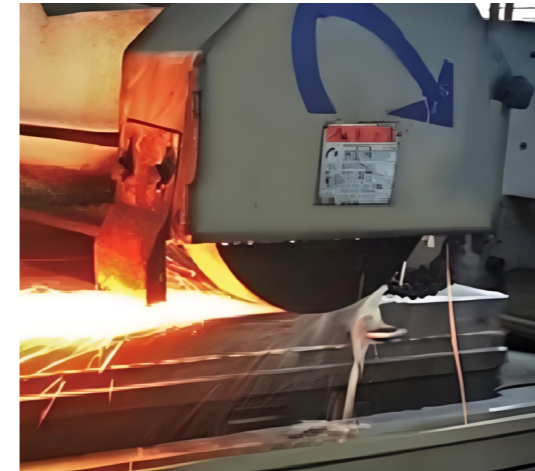
Model	Dimensions(mm)						Operating Angle	Net(kgs)
	L1	L2	H	B1	B2	Pole Extension		
GME-MCC-10175	100	225	110	75	100	0.5+1.5 or 1+3	0°-60°	12.6
GME-MCC-1515	100	200	115	100	150	0.5+1.5 or 1+3	0°-60°	17
GME-MCC-1530	150	300	115	100	150	0.5+1.5 or 1+3	0°-60°	34.5
GME-MCC-12525	150	250	115	100	125	0.5+1.5 or 1+3	0°-60°	23

Standard Pitch Electromagnetic Chuck



Feature:

1. The chuck holding force is strong, safe, and reliable for use, and very convenient to position magnetic workpieces that are not suitable to clamp by the electromagnetic plate connected with a direct current supply.
2. The material of the magnetic isolation is brass, The magnetic force can reach 120N/CM². The electromagnetic plate is used in workpieces that require processing by a strong attraction-facing machine. It is most effective in heaving the cut of the forming machine.



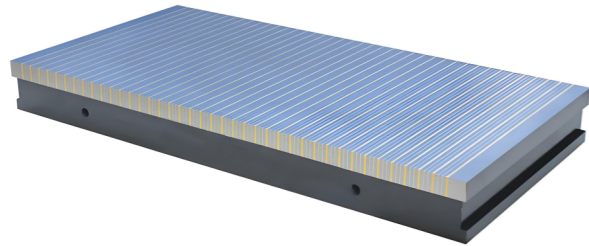
Suitable:

Widely used in grinding machines.

Specification:

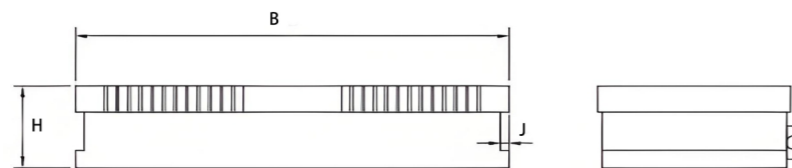
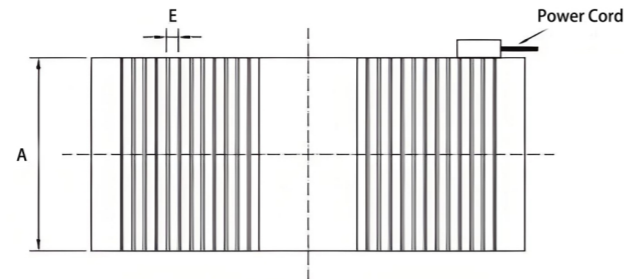
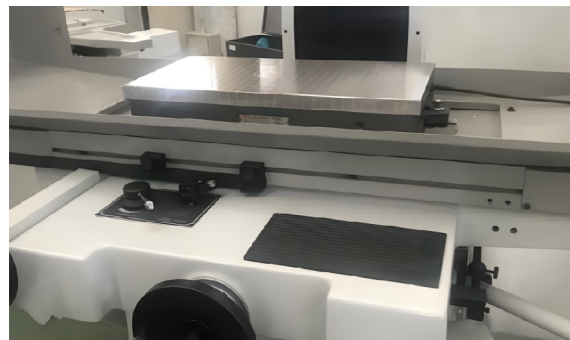
Model	Dimensions(mm)				DC	Current(A)	Weigh(Kgs)
	A	B	H	E Pole Distance			
GME-EMQC-2063A	200	630	95	18+4	110V	1.32	70
GME-EMQC-2046A	200	460	95	18+4	110V	1.5	54
GME-EMQC-2550A	250	500	95	18+4	110V	1.8	72
GME-EMQC-3060A	300	600	95	18+4	110V	2.4	105
GME-EMQC-3068A	300	680	95	18+4	110V	1.68	115
GME-EMQC-32100A	320	1000	110	18+4	110V	1.92	210
GME-EMQC-4080A	400	800	110	18+4	110V	2.4	210
GME-EMQC-40100A	400	1000	110	18+4	110V	2.64	245
GME-EMQC-50100A	500	1000	110	18+4	110V	3	280
GME-EMQC-50150A	500	1500	115	18+4	110V	3.96	405
GME-EMQC-6080A	600	800	115	18+4	110V	2.4	320
GME-EMQC-60100A	600	1000	115	18+4	110V	2.64	385
GME-EMQC-60110A	600	1100	115	18+4	110V	3.6	410
GME-EMQC-63100A	630	1000	115	18+4	110V	2.88	405
GME-EMQC-63125A	630	1250	115	18+4	110V	3.6	460

Fine Pitch Electromagnetic Chuck



Feature:

1. Few mechanical and thermal deformations.
2. Fine pole divisions - for the more uniform magnetic holding of small parts.
3. Low height of the magnetic chuck for increasing clearance of larger workpieces, and makes it light and much grinding space.
4. Special flatness and parallelism tolerances are available on request.
5. Good stabilization, powerful attraction, and few remanences.



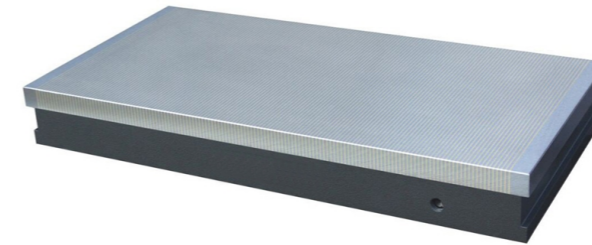
Suitable:

Widely used in grinding machine.

Specification:

Model	Dimensions(mm)				DC	Current(A)	Weight(kgs)
	A	B	H	E Pole Distance			
GME-EPQC-1540P	150	400	85	3+5+0.5+5+0.5+5	110V	0.6	40
GME-EPQC-2045P	200	450	85	3+5+0.5+5+0.5+5	110V	0.67	52
GME-EPQC-2050P	200	500	85	3+5+0.5+5+0.5+5	110V	0.72	58
GME-EPQC-2550P	250	500	85	3+5+0.5+5+0.5+5	110V	0.84	72
GME-EPQC-3060P	300	600	85	3+5+0.5+5+0.5+5	110V	1.18	104
GME-EPQC-4080P	400	800	85	3+5+0.5+5+0.5+5	110V	1.68	185
GME-EPQC-40100P	400	1000	85	3+5+0.5+5+0.5+5	110V	2.64	232
GME-EPQC-50100P	500	1000	85	3+5+0.5+5+0.5+5	110V	2.76	293
GME-EPQC-50120P	500	1200	85	3+5+0.5+5+0.5+5	110V	4.2	349
GME-EPQC-60150P	600	1500	85	3+5+0.5+5+0.5+5	110V	4.92	522
GME-EPQC-60200P	600	2000	85	3+5+0.5+5+0.5+5	110V	4.08x2	700
GME-EPQC-70150P	700	1500	85	3+5+0.5+5+0.5+5	110V	5.4	605
GME-EPQC-80200P	800	2000	85	3+5+0.5+5+0.5+5	110V	4.32x2	930
GME-EPQC-100150P	1000	1500	85	3+5+0.5+5+0.5+5	110V	4.56x2	805
GME-EPQC-100200P	1000	2000	85	3+5+0.5+5+0.5+5	110V	5.16x2	1050
GME-EPQC-150240P	1500	2400	85	3+5+0.5+5+0.5+5	110V	8.16x3	1930
GME-EPQC-150320P	1500	3200	85	3+5+0.5+5+0.5+5	110V	8.16x4	2570
GME-EPQC-150420P	1500	4200	85	3+5+0.5+5+0.5+5	110V	9x4	3380
GME-EPQC-200320P	2000	3200	85	3+5+0.5+5+0.5+5	110V	4.8x8	3350
GME-EPQC-200420P	2000	4200	85	3+5+0.5+5+0.5+5	110V	5.4x8	4400

Micro Pitch Electromagnetic Chuck

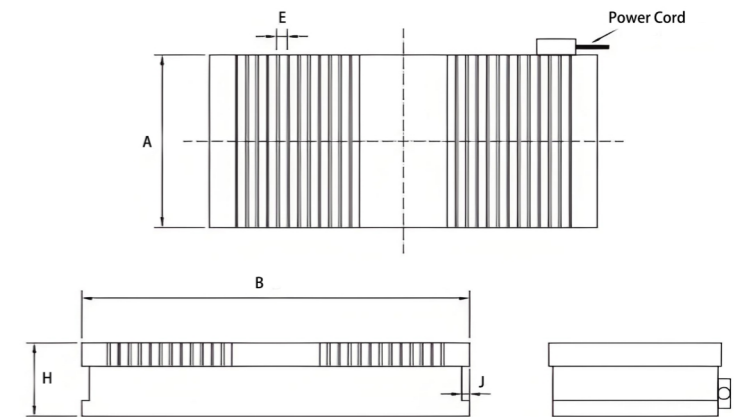


Feature:

1. Excellent steel character relieves precision change in use.
2. Small thermal deformation, high precision.
3. Maximum holding force can reach to 12kgf/mm².

Suitable:

Widely used in grinding machines, small and flatwork pieces.



Specification:

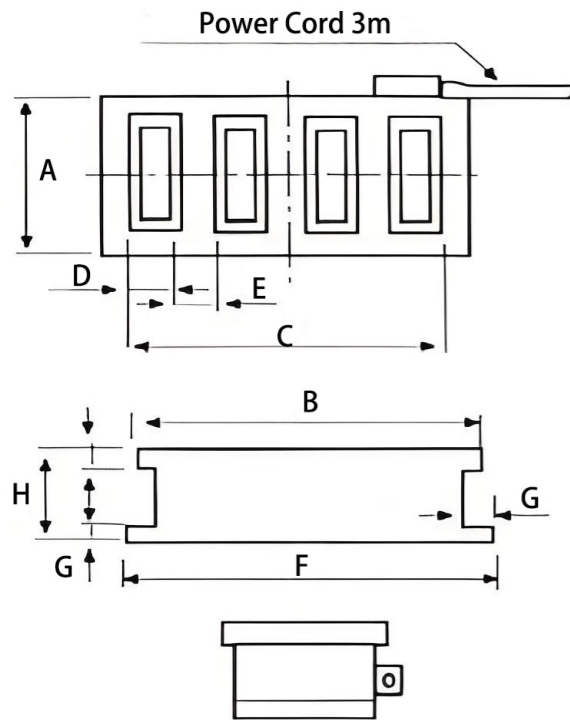
Model	Dimensions(mm)				DC	Current(A)	Weight(kgs)
	A	B	H	E Pole Distance			
GME-EMQC-1530M	150	300	90	1+3	110V	0.77	37
GME-EMQC-1540M	150	400	90	1+3	110V	0.84	45
GME-EMQC-2040M	200	400	90	1+3	110V	1.2	56
GME-EMQC-2045M	200	450	90	1+3	110V	1.44	62
GME-EMQC-2050M	200	500	90	1+3	110V	1.56	68
GME-EMQC-2550M	250	500	90	1+3	110V	2.16	85
GME-EMQC-3060M	300	600	90	1+3	110V	2.28	130
GME-EMQC-30100M	300	1000	90	1+3	110V	3.36	175
GME-EMQC-4080M	400	800	90	1+3	110V	3.48	200
GME-EMQC-40100M	400	1000	90	1+3	110V	4.56	230
GME-EMQC-50100M	500	1000	90	1+3	110V	4.8	255
GME-EMQC-50120M	500	1200	90	1+3	110V	5.04	285
GME-EMQC-60100M	600	1000	90	1+3	110V	5.16	310
GME-EMQC-1540X	150	400	90	0.5+1.5	110V	0.84	45
GME-EMQC-2040X	200	400	90	0.5+1.5	110V	1.2	56
GME-EMQC-2045X	200	450	90	0.5+1.5	110V	1.32	62
GME-EMQC-2050X	200	500	90	0.5+1.5	110V	1.56	68
GME-EMQC-2550X	250	500	90	0.5+1.5	110V	2.04	85
GME-EMQC-3060X	300	600	90	0.5+1.5	110V	2.16	130
GME-EMQC-30100X	300	1000	90	0.5+1.5	110V	3.36	175
GME-EMQC-4080X	400	800	90	0.5+1.5	110V	3.48	200
GME-EMQC-40100X	400	1000	90	0.5+1.5	110V	4.56	230
GME-EMQC-50100X	500	1000	90	0.5+1.5	110V	4.8	255
GME-EMQC-50120X	500	1200	90	0.5+1.5	110V	5.04	285

Electromagnet Clamping Chuck for Milling Machine



Feature:

1. The magnetic panel is engraved with low-carbon steel as a whole, which is wear-resistant and corrosion-resistant.
2. The surface accuracy of the magnetic panel can reach the accuracy of 0.001mm/1000mm, reducing the error of the machining equipment on the machining accuracy of the workpiece and improving the machining accuracy of the workpiece.
3. This series of chucks is an ideal choice for improving productivity and reducing the intensity of workers' labor. Among them: the X91F series of products prevent milling planer magnetization and improve machining accuracy.



Suitable:

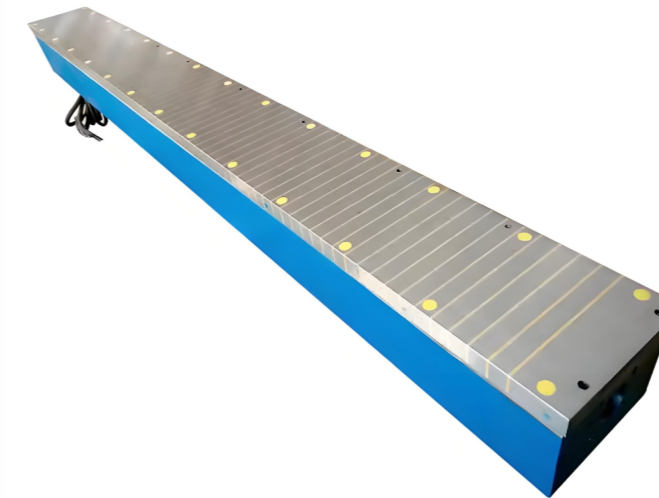
For milling machines, molding machines, planer, and turret milling machines, recutting is the most effective. It is very convenient to locate the magnetizing workpiece which is not suitable for mechanical clamping. The suction of the whole sucker is very uniform and absorbs 160N/cm².

Specification:

Model	Dimensions(mm)							Weight (kgs)	Rated voltage (V)	Rated current (A)
	A	B	C	E	F	G	h			
GME-X91-300X680	300	680	635	5(4+25+4+22)	708	20	146	189	110	2.75
GME-X91-300X800	300	800	745	5(4+25+4+22)	818	20	146	220	110	3.2
GME-X91-400X800	400	800	732	5(4+25+4+22)	816	18	132	225	110	3.78
GME-X91-400X1000	400	1000	920	5(4+25+4+22)	1016	18	132	312	110	4.62
GME-X91-500X1000	500	1000	941	89(32+4+15+4+30+4)	1034	20	142	376	110	5
GME-X91-500X1200	500	1200	1157	89(32+4+15+4+30+4)	1250	20	142	450	110	6.11
GME-X91-500X1500	500	1500	1445	89(32+4+15+4+30+5)	1550	20	120	540	110	6.5
GME-X91-600X1000	600	1000	920	89(32+4+15+4+30+6)	1034	20	120	430	110	5.3
GME-X91-600X1500	600	1500	1445	89(32+4+15+4+30+7)	1550	20	120	650	110	7
GME-X91-800X2000	800	2000	1940	89(32+4+15+4+30+8)	2060	20	120	750	110	10

※ All tables are of common specifications, special specifications can be customized.

Special Electromagnetic Chuck for Grinding Machine



Feature:

This series of disks are suitable for various types of knife sharpeners. Because the disks are convenient and fast to clamp the tools, the positioning is accurate and efficient. It can effectively reduce labor intensity and save production costs.

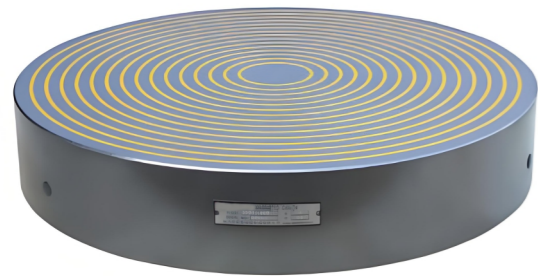
Suitable:

It is suitable for various types of woodworking knife sharpener machines, and printing machines, the best choice of the shear cutter knife grinder, The suction force can reach 120N/cm².

Specification:

Model	Dimensions(mm)			Rated Voltage(V)	Rate Current(A)	Weight (kgs)
	L	W	H			
GME-XZ11-160X1680	1680	160	150	110	2	200
GME-XZ11-180x1500	1500	180	185	110	2	240
GME-XZ11-180x1550	1550	180	180	110	2	240
GME-XZ11-190x1680	1680	190	190	110	1.5	295
GME-XZ11-190x2200	2200	190	190	110	2	390
GME-XZ11-200x1000	1000	200	200	110	1.06	215
GME-XZ11-200x1100	1100	200	165	110	1.9	200
GME-XZ11-200x1470	1470	200	160	110	1.6	230
GME-XZ11-200x1475	1475	200	165	110	2.7	260
GME-XZ11-200x1600	1600	200	165	110	2.7	290
GME-XZ11-200x1760	1760	200	170	110	1.7	320
GME-XZ11-200x2270	2270	200	200	110	2	450

Round ElectroMagnetic Chuck With Concentric Poles

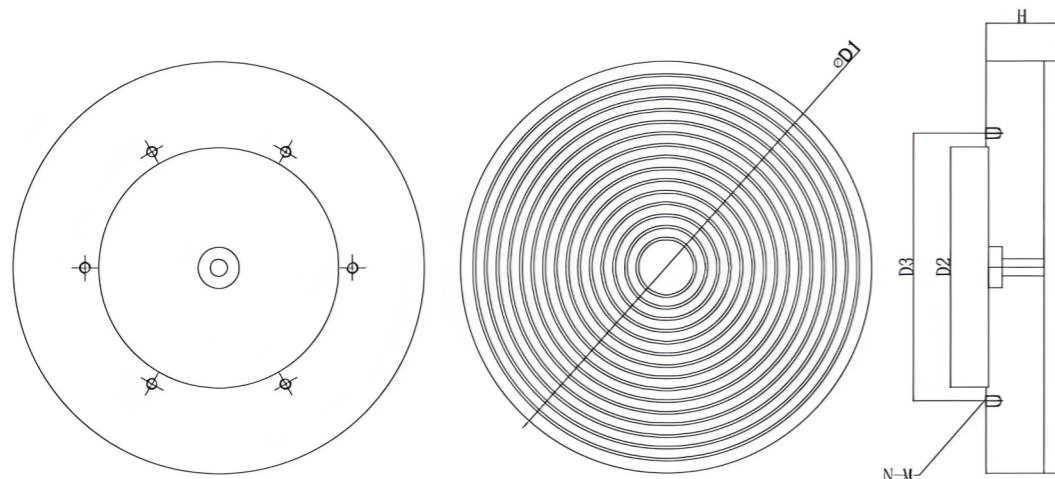


Feature:

1. Pole pitch 3+6mm.
2. Highest clamping force up to 12kgf/cm².
3. Gap-free construction pole plate.3. Real magnetic poles.
4. Coolant and waterproof structure. Minimum mechanical deformation with solid one-piece housing.

Suitable:

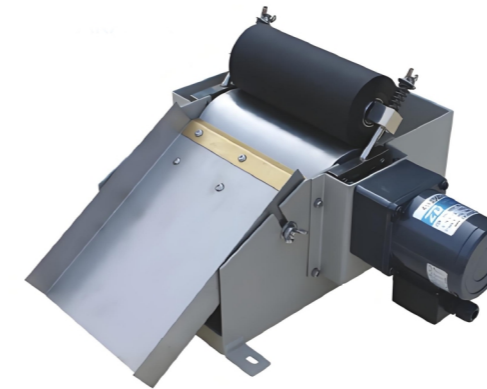
Clamping for grinding of disc shaped workpieces.



Specification:

Model	Dimensions(mm)						Voltage	Weight(kgs)
	D1	H	D2	D3	N	M		
GME-EMQC-Φ300A	300	90	160	190	4	12	DC110V	42
GME-EMQC-Φ400A	400	105	210	250	6	12	DC110V	92
GME-EMQC-Φ500A	500	105	280	320	6	12	DC110V	144
GME-EMQC-Φ600A	600	105	350	390	6	12	DC110V	208
GME-EMQC-Φ800A	800	105	450	500	6	16	DC110V	369
GME-EMQC-Φ1000A	1000	105	550	620	8	16	DC110V	577

Grinding Fluid Magnetic Separators



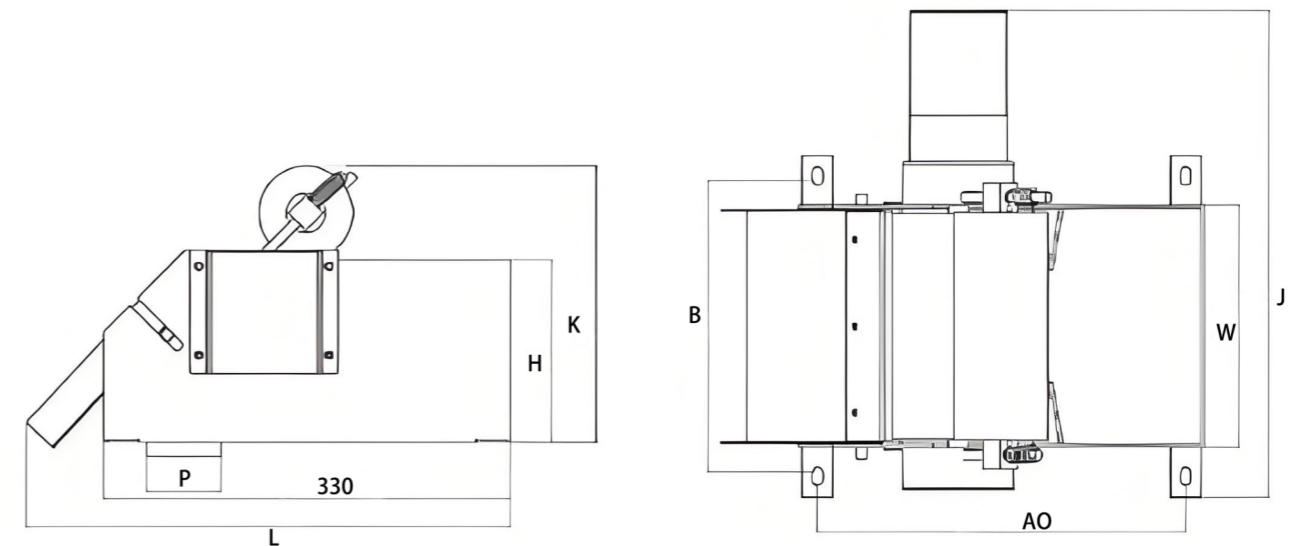
Feature:

magnetic separators employ high-intensity ferrite or rare earth magnets within a fully energized rotating drum to continuously remove ferrous particles from the flow of liquid. These systems are often used as a pre-filter to limit contaminants reaching subsequent filtration equipment.

Magnetic separators are well suited to processes where ferrous and non-ferrous contaminants are mixed with water-based coolants or straight cutting oils. They can also be used to enhance chip processing tasks and help you get the most out of your industrial filtration equipment.

Suitable:

It is used for separating magnetic grinding mud from grinding fluid and improving the cleanliness of grinding fluid.Recovery of grinding mud.reduce surface scratches.



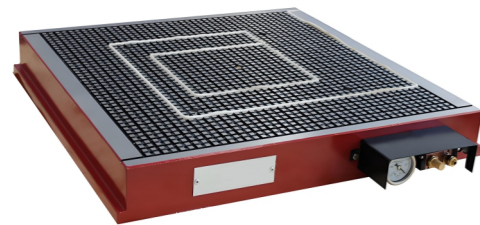
Specification:

Model	l/Min	L	W	J	H	K	A	B	Water Outlet P	Motor
GME-M2	40	390	156	365	150	225	300	196	2"	220/380V 25W
GME-M4	60	390	196	395	150	225	300	236	2"	220/380V 25W
GME-M4L	60	790	196	395	150	225	300	236	2"	220/380V 25W

Vacuum Chuck

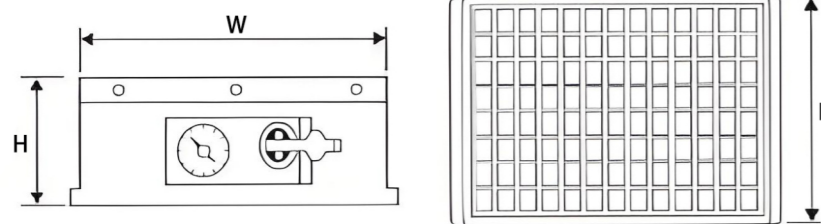
Feature:

1. No need for vacuum pump: This product uses a vacuum ejector, so it can be operated by an air compressor. Even if cutting oil, cutting water or cutting chips are sucked into the machine, this machine can discharge them out of the body.
2. Any type of processed products can be done very well: For the processing of the upper surface, side processing, and grinding operations, etc., they can be done very well. With the use of metal plates, it can be used to process the surface and side of objects with special shapes, and it can also easily complete the perforation operation.
3. The size can be adjusted at will: The combination machine can be changed according to the size of the processed object. The adjustment of the machine body can be set according to the size of the processed object.
4. The setting of keyway and operation stopper: A keyway is set at the bottom of the group, so that accurate parallelism and verticality can be obtained when working side by side.
5. Two operation stoppers are set on the side of the body to prevent lateral pressure.



Suitable:

1. Light metal, heavy metal, iron plate, etc. Plastic products, ceramics, glass, molybdenum, magnesium alloy, stainless steel, wood, stone and other non-magnetic and non-ventilated flat surface processing items. Small shape, flat surface. The outer surface of the object needs to be fully processed, but there is no effective way to clamp the object.
2. Using traditional clamping methods to process objects will leave scars, skewness, bending, etc. Ultra-thin, unable to clamp its surface or side, flat surface, but the object has a special shape, parallelism: ± 0.01 .

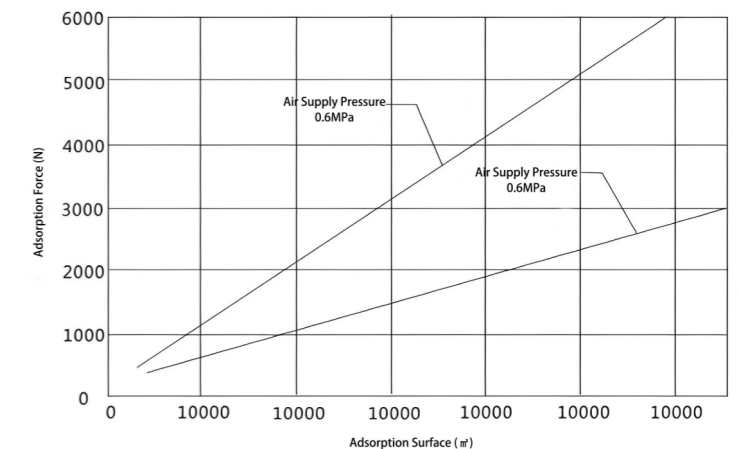
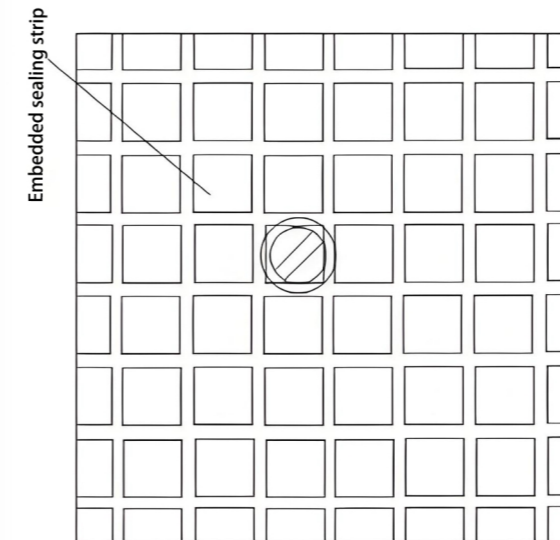
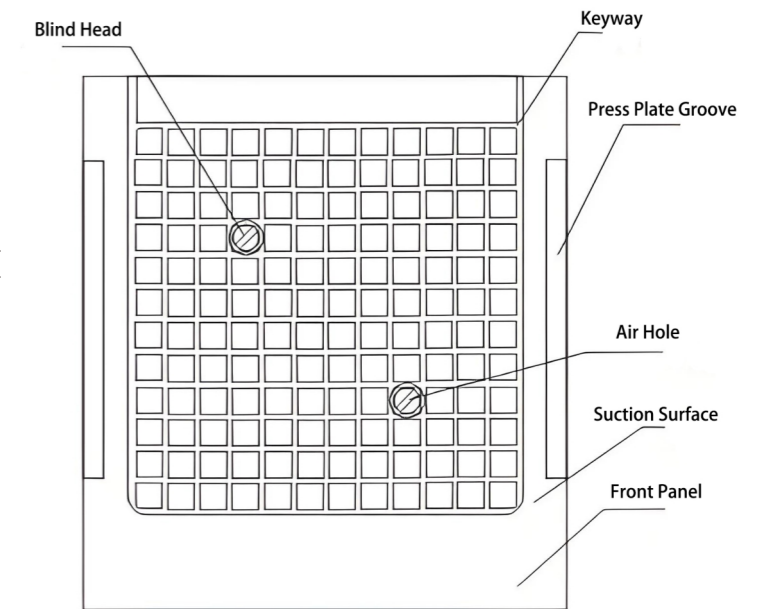


Specification:

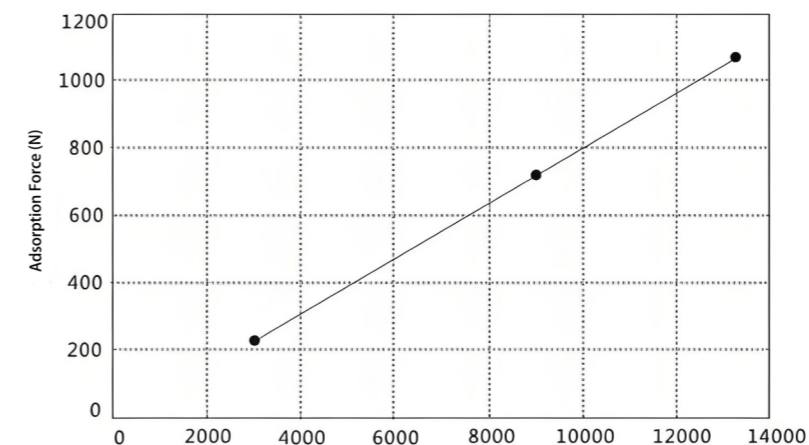
Model	L	W	H	Air Consumption (l/min)	Max Intake (l/min)	Weight(kgs)
GME-VC-1515	150	150	75	23	12	9.2
GME-VC-1530	150	300	75	23	12	13.7
GME-VC-2020	200	200	75	46	24	12.1
GME-VC-2040	200	400	75	46	24	22.2
GME-VC-2525	250	250	75	78	40	26.4
GME-VC-2550	250	500	75	78	40	30.6
GME-VC-3030	300	300	75	23	12	23.4
GME-VC-3040	300	400	75	46	24	37
GME-VC-3060	300	600	75	46	24	48.8
GME-VC-3075	300	750	75	46	24	50.4
GME-VC-4040	400	400	75	46	24	42.5
GME-VC-4060	400	600	75	92	48	82.7
GME-VC-4080	400	800	75	92	48	72.9
GME-VC-40100	400	1000	75	92	48	103.1
GME-VC-5050	500	500	75	78	10	59.2
GME-VC-5075	500	750	75	15	80	87.8

How to Use:

Clean the bottom of the suction cup body, put it on the machine tool workbench, press the two side pressure plate grooves with the pressure plate, connect one end of the suction cup self-distribution pipe (8mm) to the suction cup jack, and the other end to the air source on the workshop or equipment. Then embed the sealing strip into the keyway of the suction cup table (smaller than the bottom plane of the workpiece to be processed) to form the shape of the product (operate according to the maximum size, do not exceed the product size). Then place the workpiece to be processed on the suction cup table, cover the sealing strip, lightly press the workpiece product to turn on the air source switch,



Adsorption Force at Air Pressure of 0.5MPa



Please refer to the graph on the left for the suction force. However, please note that the suction force will change depending on the surface roughness of the suction and the rubber connection process.

The suction force of the optional specifications can be confirmed by vacuum pressure (KPa) x suction area (mm²).

Permanent Magnetic Lifter

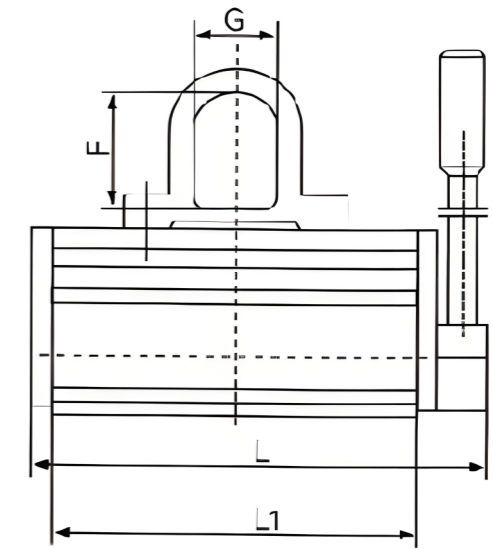
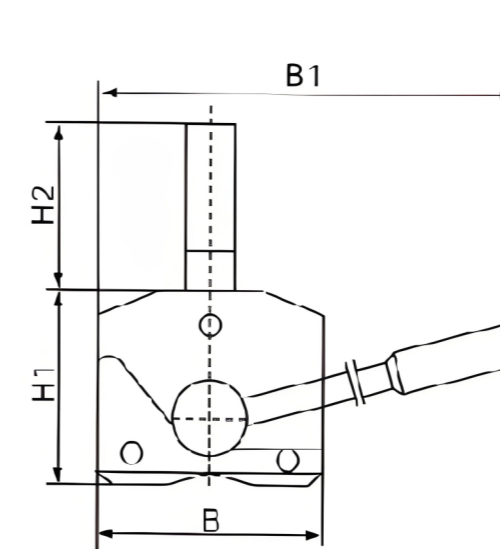
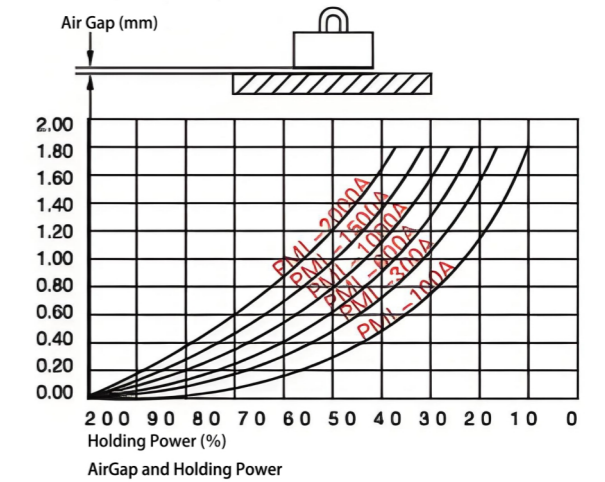
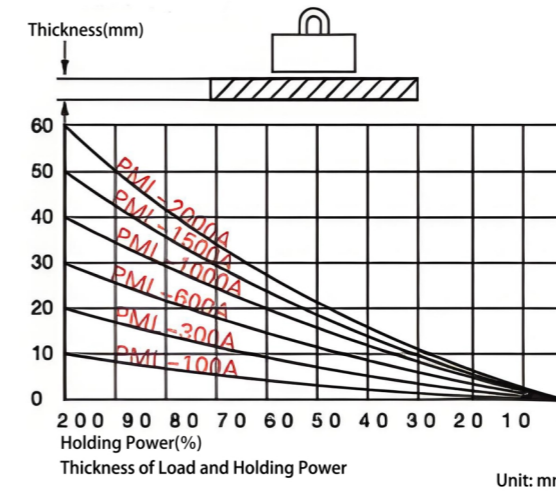


Feature:

The permanent magnetic lifter is composed of Ndfb permanent magnetic material with a high-performance ferromagnetic system. The handle's movement changes the magnetic force of the ferromagnetic system to achieve adsorption and release to the workpiece. There is a steel ring on top of the magnetic lifter for hoisting objects and a v-shaped groove at the bottom for holding corresponding cylindrical objects. The force magnet guarantees the indefinite high degree of concentration also the stable strength. The safeload coefficient is 3.5 times, even if the is hung between the work piece and the lifter has a bigger air gap, also guarantees the best active status.

Suitable:

It is mainly used in the hoisting process with the hoisting work piece connection, to move the steel plate and other magnetic induction work piece. Safe and reliable operation, the compact lightweight is widely applied in factories, wharves, warehouses, and transportation. The improvement of loading and unloading transporting work working conditions enhances the working efficiency.



Specification:

Model	L	L1	B	H1	H2	B1	F	G	Weight(kg)
GME-PML-100A	135	110	60	65	46	150	32	32	3.5
GME-PML-300A	203	165	87	89	68	223	45	38	10
GME-PML-600A	266	226	112	109	86	287	58	45	21
GME-PML-1000A	330	290	148	125	95	364	60	52	40
GME-PML-1500A	385	330	178	145	118	447	70	65	65
GME-PML-2000A	470	420	178	145	118	487	70	65	83

Materials Shape	Steel Plate				Cicular Steel Products		
	Max Hangs The Lifting Sapacity(kgs)	Min Thickness (mm)	Max Length (km)	Max Hangs The Lifting Sapacity(kgs)	Max Diameter (mm)	Max Length (mm)	Min Thickness (mm)
GME-PML-100A	100	10	1000	50	100	1000	10
GME-PML-300A	300	20	1500	150	300	1500	12
GME-PML-600A	600	30	2000	300	400	2000	20
GME-PML-1000A	1000	40	3000	500	450	3000	28
GME-PML-1500A	1500	50	3000	750	500	3000	34
GME-PML-2000A	2000	60	3000	1000	600	3000	40