

TEL: 86-592-6682467

FAX: 86-592-6682467

Email: [sales@greatmagtech.com](mailto:sales@greatmagtech.com)

Web: [www.greatmagtech.com](http://www.greatmagtech.com)

**2019**

NdFeB system



***Great Magtech (Xiamen) Electric Co., Ltd.***

# Table of Content

01.Company Profile	1-8
02.NdFeB Magnet	9-15
03. Internal Management	16-22
04.Quality Control System	23-30
05.After-sales Service	31-32



## Company Profile Brief Introduction

### COMPANY NAME

Great Magtech(Xiamen) Electric Co., Ltd.

### ADDRESS

5F, No.601 Hengtian Rd, Jimei District,  
Xiamen,361024, China

### BUSINESS SCOPE

Rare earth magnet and its assembly

### APPLIED RANGE

Widely used in electronics, power machinery, medical devices, toys, packaging, hardware machinery, aerospace and other fields

### PRODUCT FEATURES

Low heavy rare earth content,  
High performance, High coercive force, radial ring

### MAIN MARKET

USA, Europe, Southeast Asia



## Company Profile Factory

### CAPACITY

2000 tons

### LOCATED

Zhejiang, Ningbo

### INVESTMENT

170 millions

### ESTABLISHED TIME

2003

### STAFF

More than 200 professional and experienced staff, including 45+ R&D experts

### COVERING AREA

50000 m<sup>2</sup>

### CERTIFICATES

TS16949, ISO9001-2000, CE, RoHS and SGS guidelines



2019 NdFeB system

## Company Profile Applied Range



1

Serve Motor  
35SH/38SH



2

Wind Power Generator  
42H/42SH



3

Traction Machine  
35SH



4

New Energy Vehicle  
35UH/38EH



5

Air Conditioning Compressor  
38UH/40UH



6

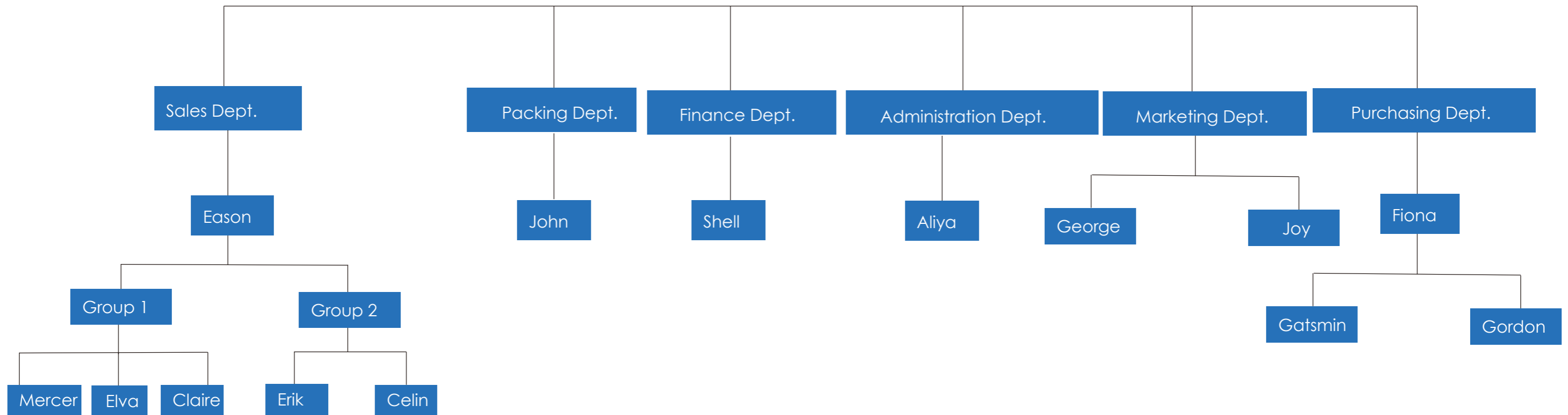
Automotive Sensor  
35UH

# Company Profile

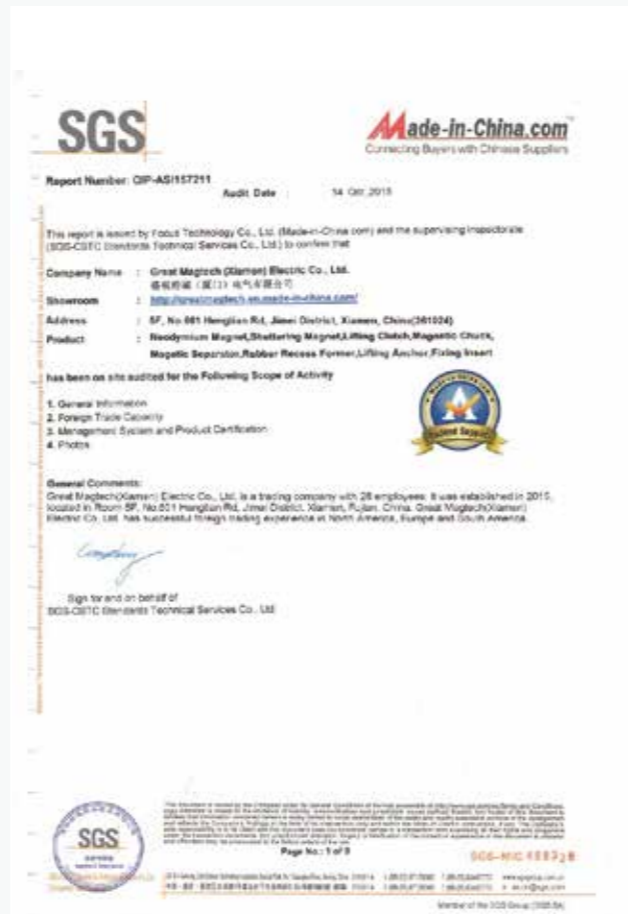
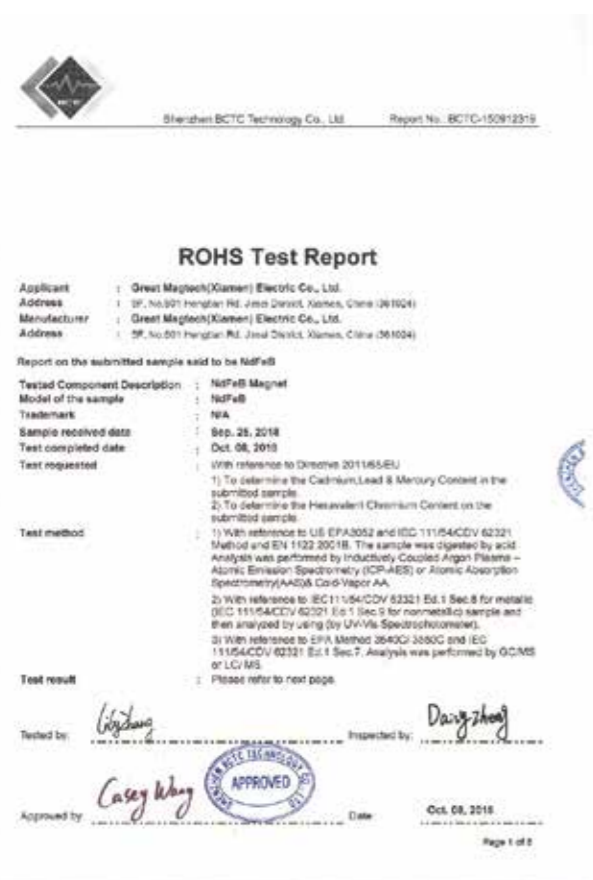
## Our Team



### GME



# Company Profile Certificates



# Company Profile Cooperate Brand



## Company Profile Different Shapes

All the details can be customized.



Disc



Block



Arc



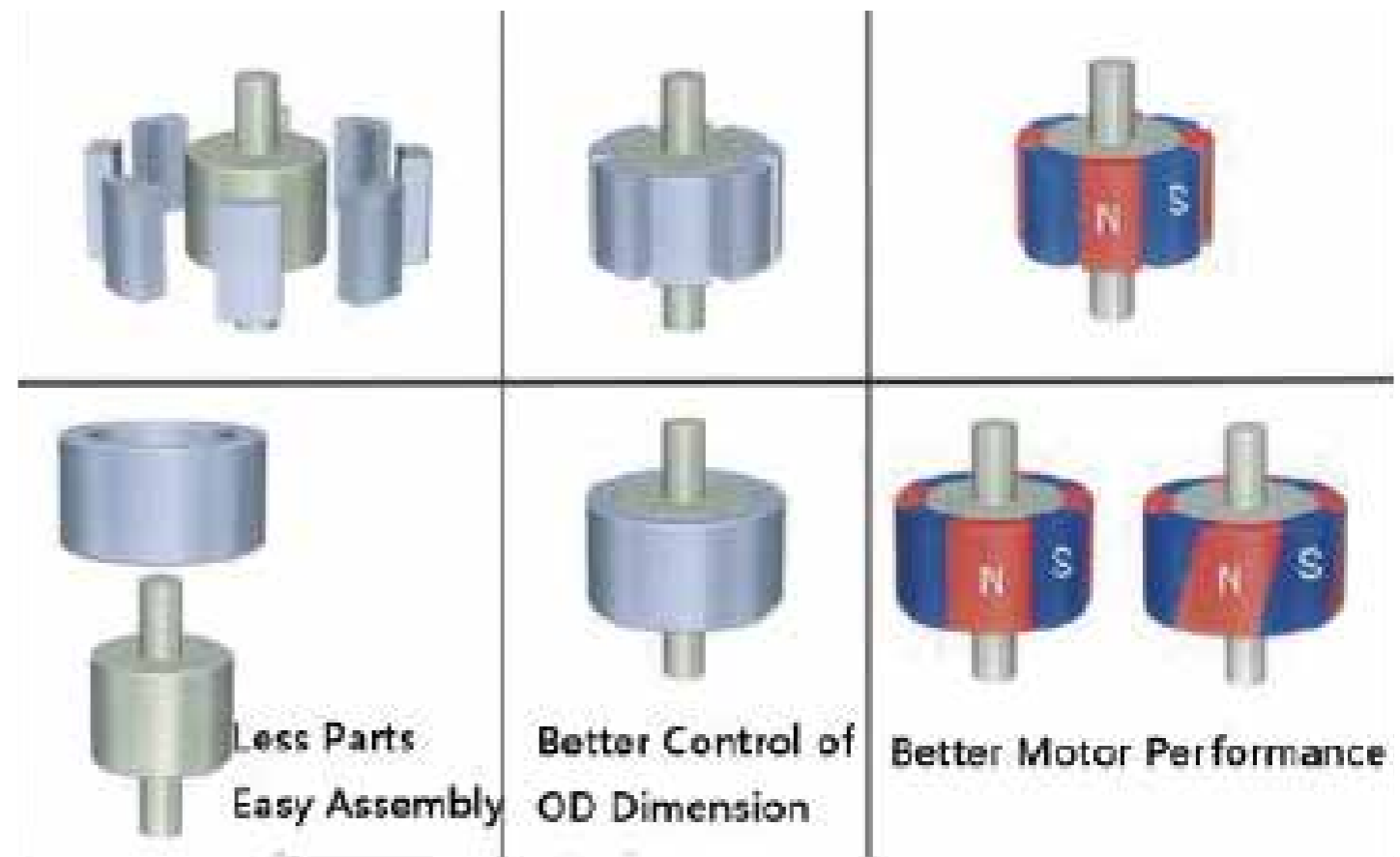
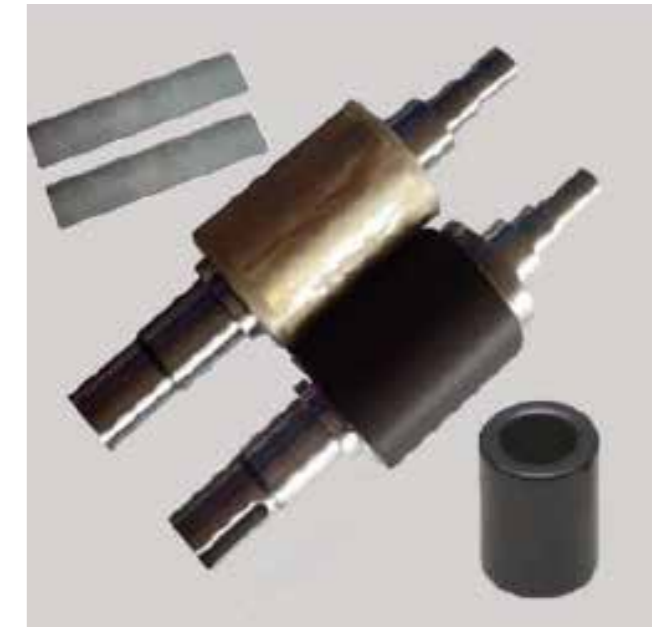
Countersunk



Stepped

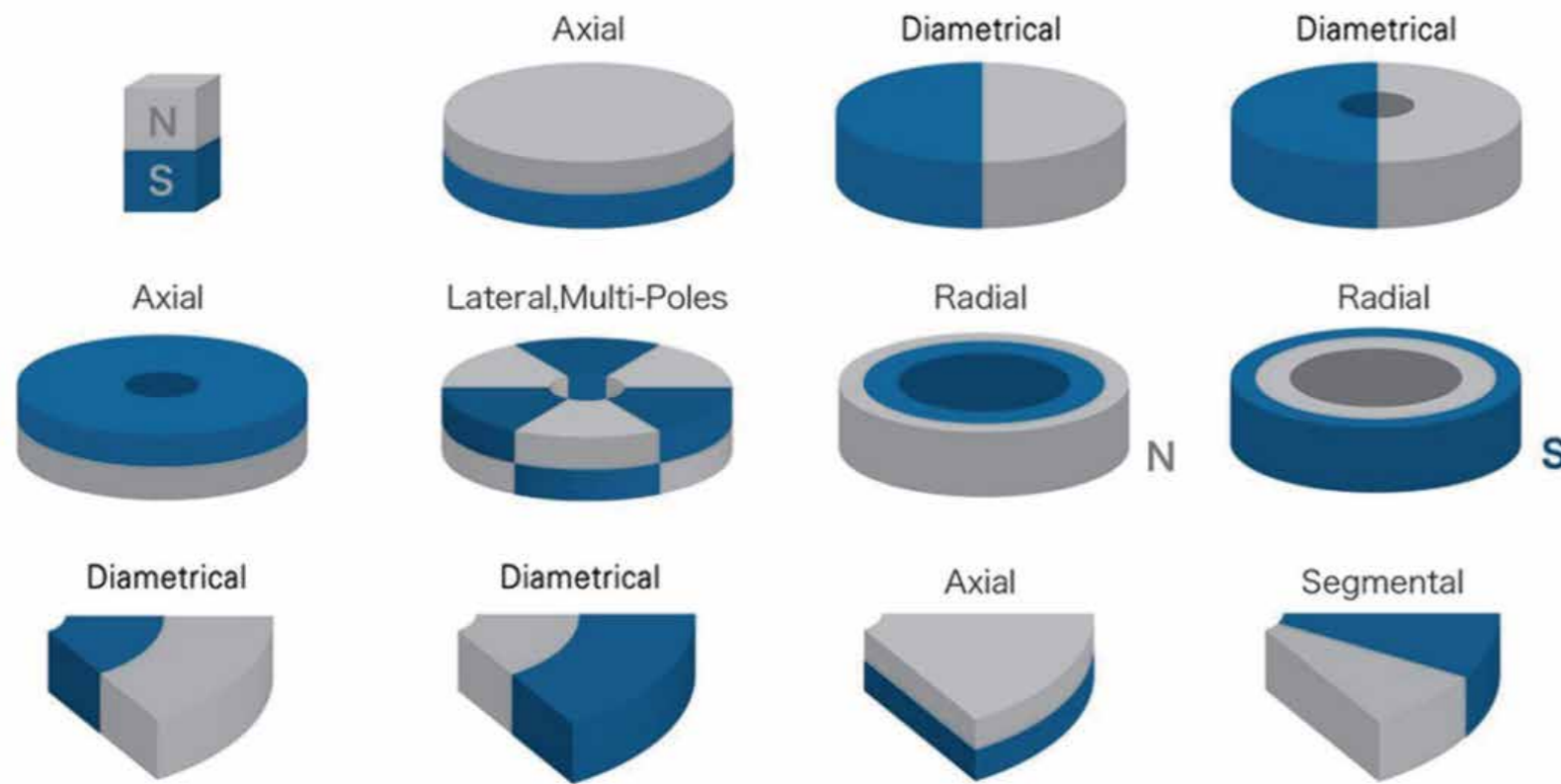
## NdFeB Magnet Radial Ring

Serve motor will be more stable, the performance will be better and market competitiveness will be stronger if we use radial ring.



# NdFeB Magnet

## Different Magnetizing Directions



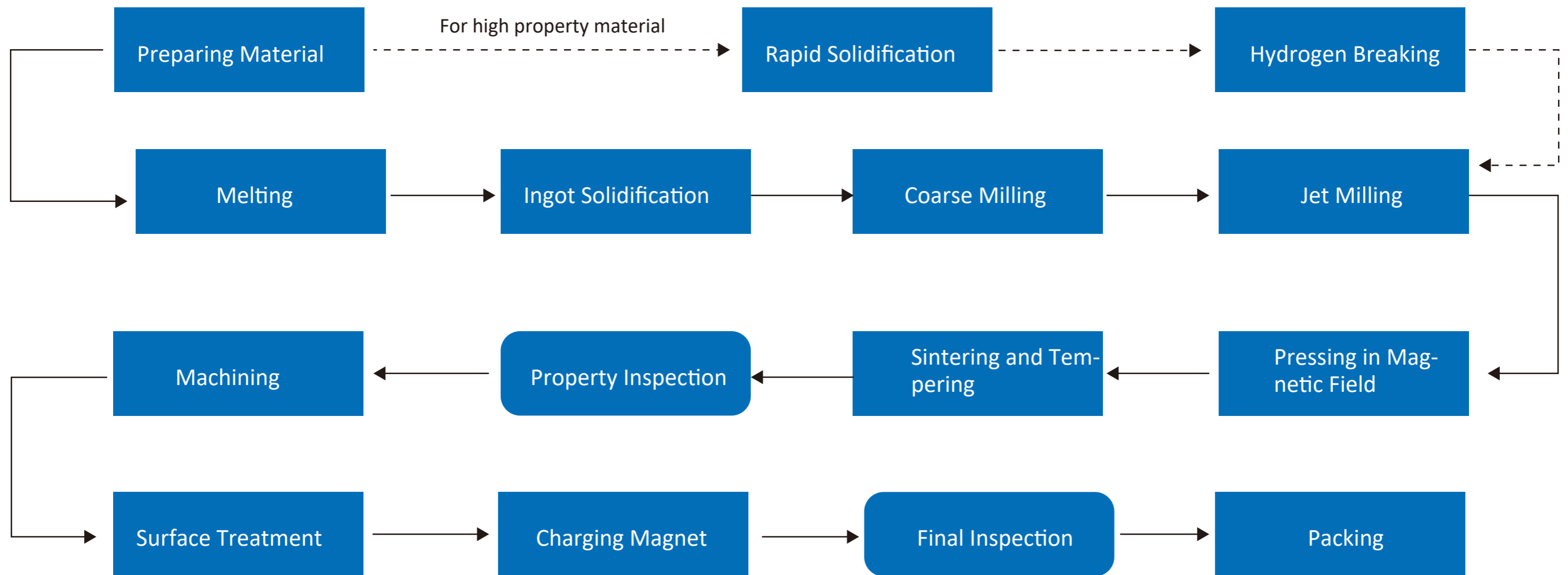
## Properties of Sintered NdFeB Magnet

GRADE	Remanence (Br)		Coercive Force (bHc)		Intrinsic Coercive (iHc)		Max Energy Product (BH)max		Working Temp.
	T	KGs	KA/m	KOe	KA/m	KOe	KJ/m³	MGOe	Tw(°C)
N35	1.18-1.23	11.8-12.3	≥868	≥10.9	≥955	≥12	263-287	33-36	≤80
N38	1.22-1.28	12.2-12.8	≥899	≥11.3	≥955	≥12	287-310	36-39	≤80
N40	1.26-1.31	12.6-13.1	≥923	≥11.6	≥955	≥12	302-326	38-41	≤80
N42	1.28-1.34	12.8-13.4	≥923	≥11.6	≥955	≥12	318-342	40-43	≤80
N45	1.32-1.37	13.2-13.7	≥876	≥11.0	≥955	≥12	342-366	43-46	≤80
N48	1.36-1.42	13.6-14.2	≥836	≥10.5	≥876	≥11	358-390	45-48	≤80
N50	1.39-1.45	13.9-14.5	≥836	≥10.5	≥876	≥11	374-406	48-51	≤80
N52	1.42-1.48	14.2-14.8	≥796	≥10.0	≥876	≥11	390-422	49-53	≤60
N35M	1.18-1.23	11.8-12.3	≥868	≥10.9	≥1114	≥14	263-287	33-36	≤100
N38M	1.22-1.28	12.2-12.8	≥899	≥11.3	≥1114	≥14	287-310	36-39	≤100
N40M	1.26-1.31	12.6-13.1	≥923	≥11.6	≥1114	≥14	302-326	38-41	≤100
N42M	1.28-1.34	12.8-13.4	≥923	≥11.6	≥1114	≥14	318-342	40-43	≤100
N45M	1.34-1.39	13.4-13.9	≥876	≥11.0	≥1114	≥14	342-366	43-46	≤100
N48M	1.36-1.42	13.6-14.2	≥876	≥11.0	≥1114	≥14	366-390	46-49	≤100
N35H	1.18-1.23	11.8-12.3	≥868	≥10.9	≥1353	≥17	263-287	33-36	≤120
N38H	1.22-1.28	12.2-12.8	≥899	≥11.3	≥1353	≥17	287-310	36-39	≤120
N40H	1.26-1.31	12.6-13.1	≥923	≥11.6	≥1353	≥17	302-326	38-41	≤120
N42H	1.28-1.34	12.8-13.4	≥923	≥11.6	≥1353	≥17	318-342	40-43	≤120
N45H	1.33-1.39	13.3-13.9	≥923	≥11.6	≥1353	≥17	342-366	43-46	≤120
N48H	1.36-1.42	13.6-14.2	≥923	≥11.6	≥1274	≥16	366-390	46-49	≤120
N33SH	1.14-1.19	11.4-11.9	≥836	≥10.5	≥1592	≥20	247-270	31-34	≤150
N35SH	1.18-1.23	11.8-12.3	≥868	≥10.9	≥1592	≥20	263-287	33-36	≤150
N38SH	1.22-1.28	12.2-12.8	≥899	≥11.3	≥1592	≥20	287-310	36-39	≤150
N40SH	1.26-1.31	12.6-13.1	≥923	≥11.6	≥1592	≥20	302-326	38-41	≤150
N42SH	1.28-1.34	12.8-13.4	≥923	≥11.6	≥1592	≥20	318-342	40-43	≤150
N45SH	1.33-1.39	13.3-13.9	≥923	≥11.6	≥1592	≥20	342-366	43-46	≤150
N28UH	1.03-1.09	10.3-10.9	≥780	≥9.80	≥1990	≥25	207-231	26-29	≤180
N30UH	1.09-1.14	10.9-11.4	≥812	≥10.2	≥1990	≥25	223-247	28-31	≤180
N33UH	1.13-1.17	11.3-11.7	≥852	≥10.7	≥1990	≥25	247-263	31-33	≤180
N35UH	1.18-1.22	11.8-12.2	≥868	≥10.9	≥1990	≥25	263-287	33-36	≤180
N38UH	1.22-1.27	12.2-12.7	≥899	≥11.3	≥1990	≥25	287-310	36-39	≤180
N28EH	1.03-1.09	10.3-10.9	≥780	≥9.80	≥2388	≥30	207-231	26-29	≤200
N30EH	1.08-1.13	10.8-11.3	≥812	≥10.2	≥2388	≥30	223-247	28-31	≤200
N33EH	1.13-1.17	11.3-11.7	≥852	≥10.7	≥2388	≥30	247-263	31-33	≤200
N35EH	1.18-1.22	11.8-12.2	≥868	≥10.9	≥2388	≥30	263-287	33-36	≤200
N28AH	1.03-1.09	10.3-10.9	≥780	≥9.80	≥2786	≥35	207-231	26-29	≤220
N30AH	1.08-1.13	10.8-11.3	≥812	≥10.2	≥2786	≥35	223-247	28-31	≤220

Note: The above mentioned data is given at room temperature.

The above-mentioned maximum working temperature of magnet is changeable due to the ratio length and diameter, surface coating and environmental factors.

# NdFeB Magnet Production Process



# NdFeB Magnet Production Equipment



Strip Casting Furnace



Hydrogen Decreptitation Furnace



400 Jet Milling



Slicing Machines



Automatic Pressing Machine



Isostatic Pressing Machine

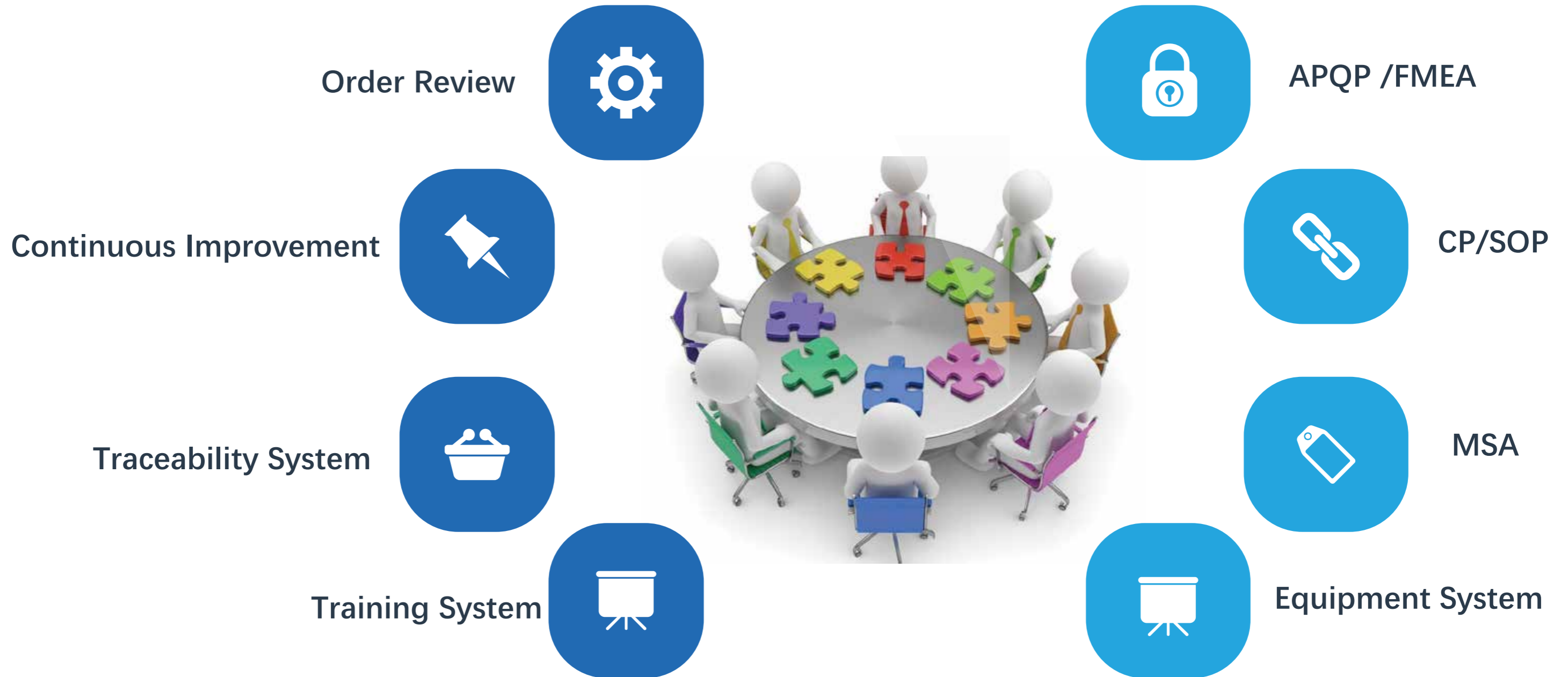


Vacuum Sintering Furnace

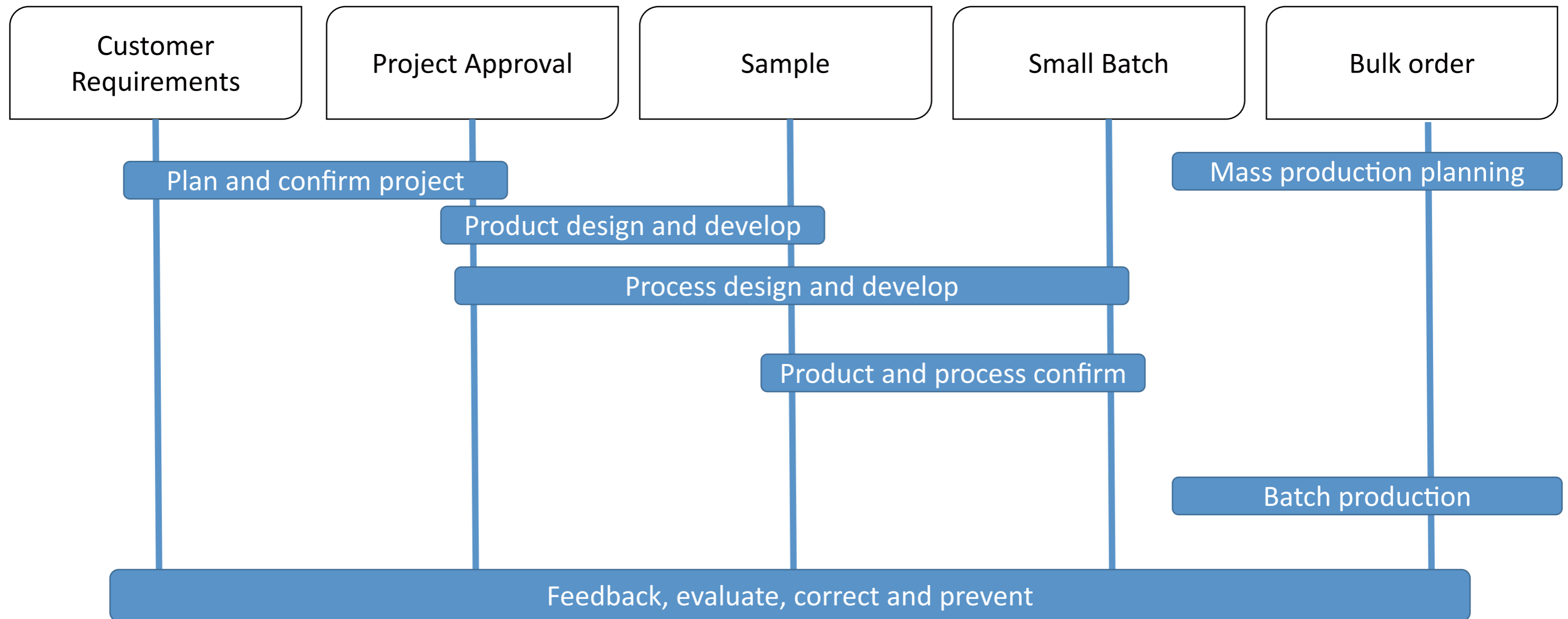


Chamfering Machine

# Internal Management System



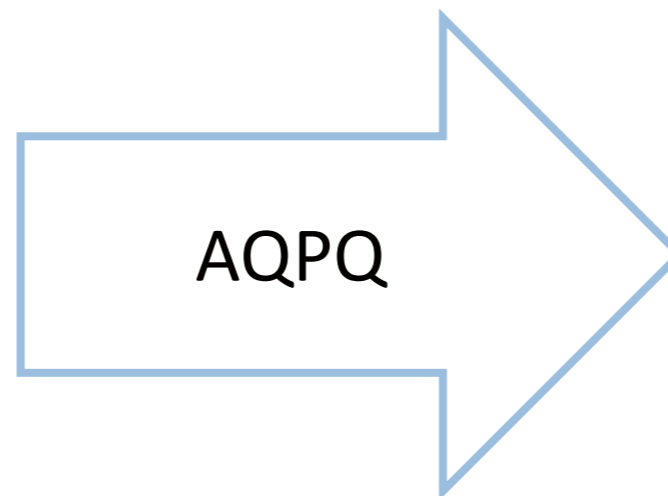
# Internal Management System Form a APQP



# Internal Management System Output Standard Documents

## Input Requirements

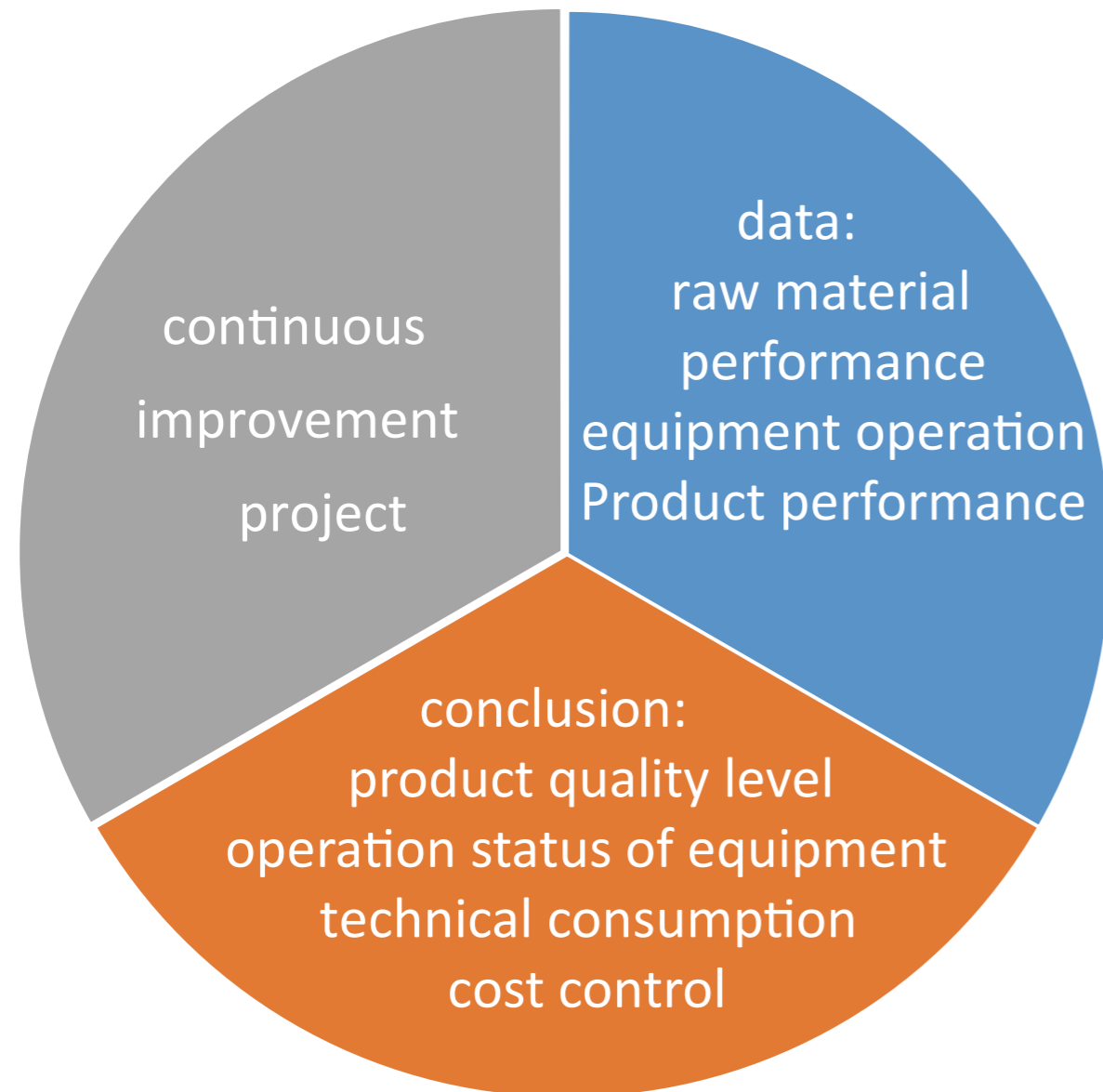
- Grade
- Size
- Coating
- Inspection
- Magnetizing Direction
- Packing
- Delivery time



- FMEA
- Standard
- CP
- SOP
- PPAP

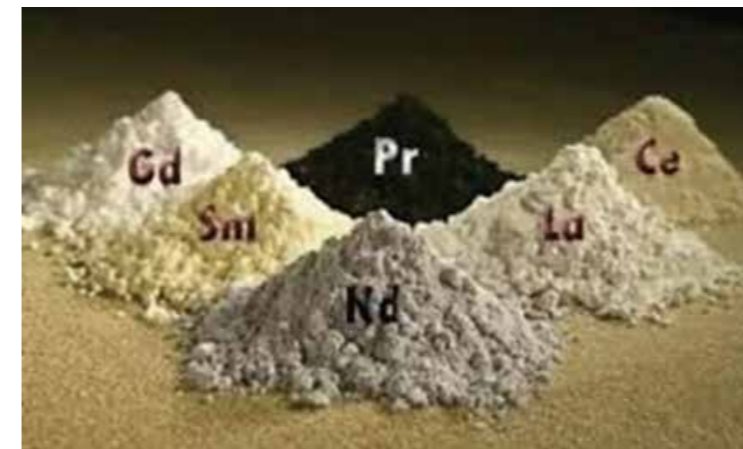
**Internal Management System**  
**Data Analysis and Continuous**

improvement

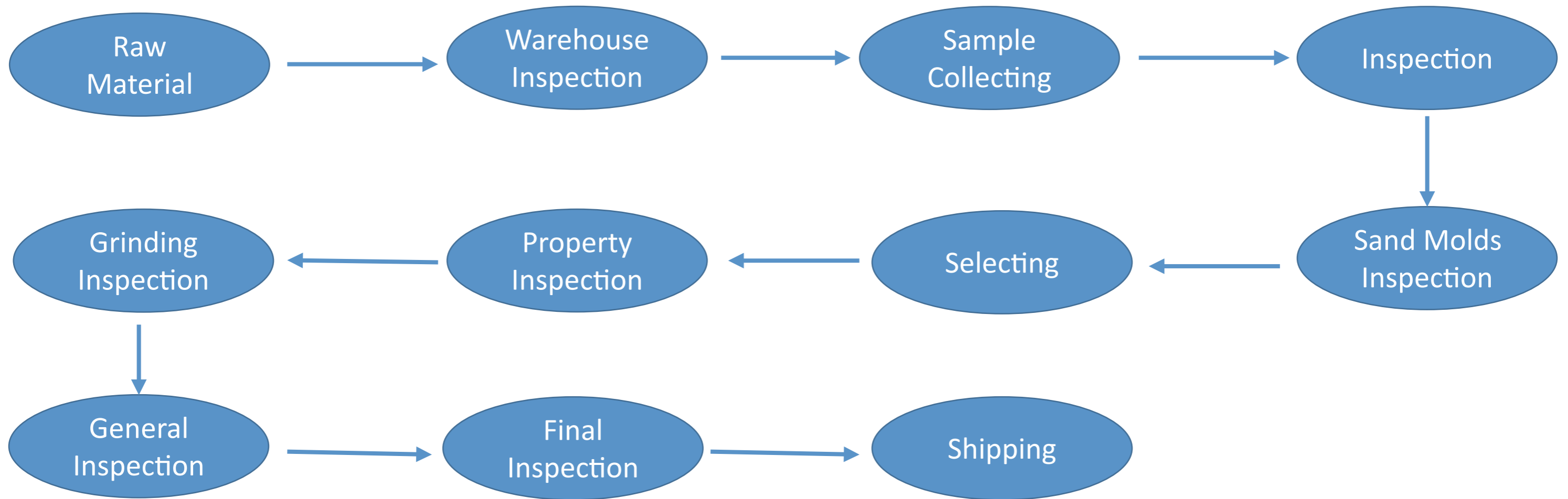


**Quality Control System**  
**Supply Chain Management System**

1. 5R Management Material Procurement System.
2. Our purchasing manager has more than 7-year purchasing experience and rich in experience quality control and the advantages of different factories and different product, and different quality levels.
3. According to your actual need, GME would select our most suitable factory for you. Providing professional technical support is one of our values.

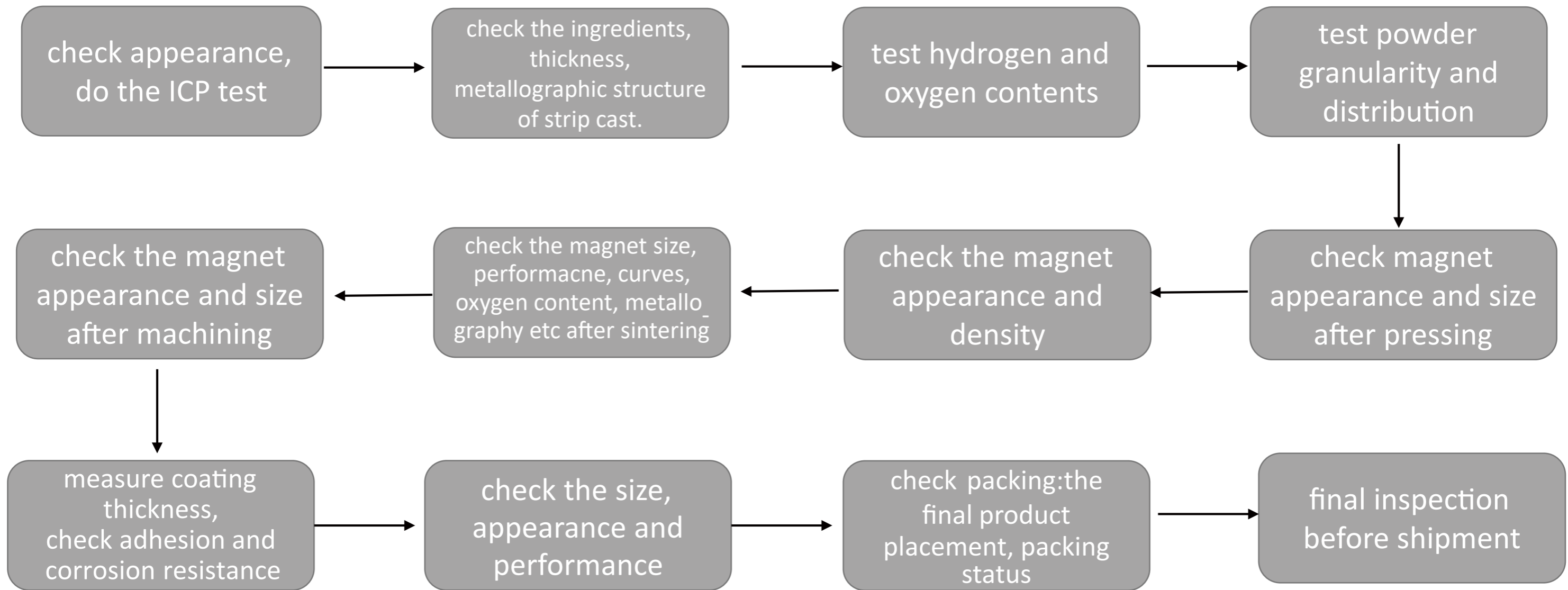


Quality Control System  
Quality Management System



# Quality Control System

## QC System



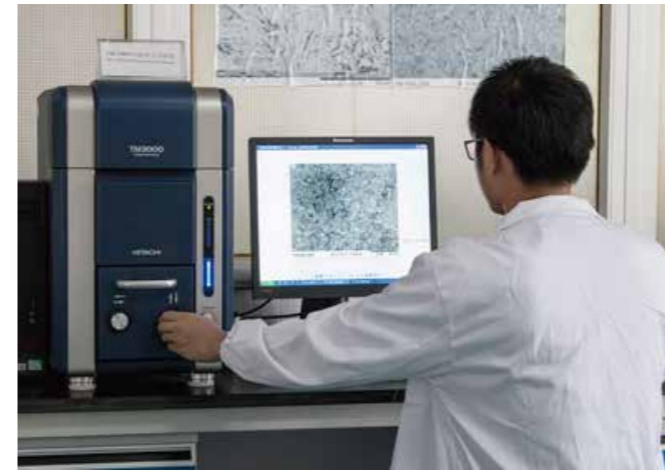
# Quality Control System Testing Machines



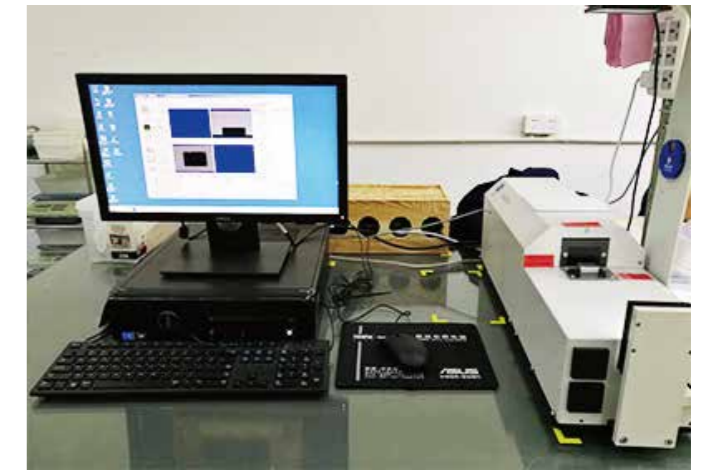
**Magnetic Tester**



**Laser Granularity Analyzer**



**Scanning Electron Microscope**



**3D Flash Measuring Instrument**



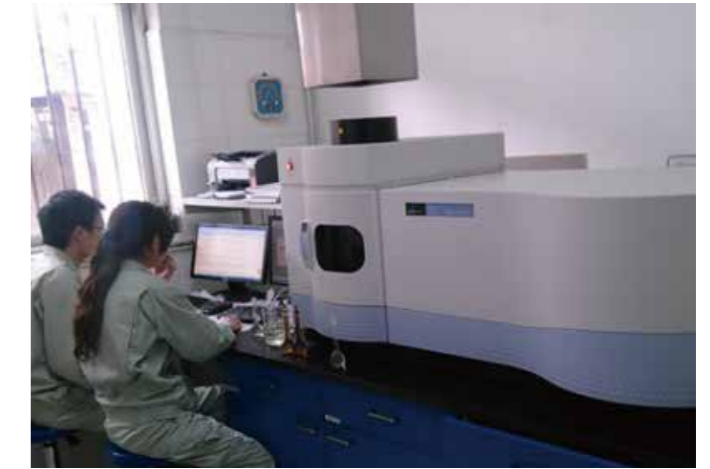
**EF5 Electronic Fluxmeter**



**Oxygen Analyzer**



**Hast Tester**



**Inductively Coupled Plasms**

# Quality Control System

## Packing

1. By air:  
 Plastic Washer—OPP Bag—Cardboard Box—Foam Box—Iron Sheet Box—Double Wall Corrugated Carton



2. By sea:



Pallet:



Wood Carton:



Packing Workshop

# After-sales Service

## After-Sales System

1. Our response will be always available within 12 hours.
2. Products and packing pictures before shipment.
3. Offer Invoice, packing list and documents timely.
4. Shipping notice and goods arrival notice at timely.
5. Magnet application suggestion and tips.

Hi Mohd,

Thanks for waiting.

Samples have been sent out by your Fedex account yesterday.  
 And the tracking number is 775603775353, <https://www.fedex.com/en-us/home.html>

Enclosed please see some pictures in advance.

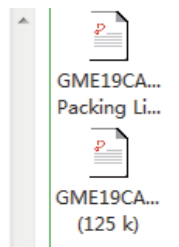


Hi Veloshnee,

Thanks a lot for your understanding and support.

Magnets has been collected by forwarder yesterday. Enclosed please find Commercial Invoice and Packing List. 🌹

Best regards,  
 Claire



## After-Sales Service Complaint System



1. Call client within 12 hours.

4. Internal checking and figure out why problem happened.

2. Communicate with client to know what problem happen, quantity and in which order or batch?

5. Offer suitable and satisfying solution, replenishment or refund.

3. Ask clients to take detailed pictures

6. Apology and avoid problem in future orders.